

# Manual Collection Point Tool

*EventTracker v7.x*

## Abstract

This document discusses on the following:

- Manually creating Collection Point using the EventTracker Collection Point Tool
- Importing data into Collection Point
- Deleting the Collection Point and data

Collection Point tool is applicable for all v7.x versions of EventTracker.

*The information contained in this document represents the current view of Prism Microsystems, Inc. on the issues discussed as of the date of publication. Because Prism Microsystems, Inc. must respond to changing market conditions, it should not be interpreted to be a commitment on the part of Prism Microsystems, Inc. and Prism Microsystems, Inc. cannot guarantee the accuracy of any information presented after the date of publication.*

*This document is for informational purposes only. Prism Microsystems, Inc. MAKES NO WARRANTIES, EXPRESS OR IMPLIED, AS TO THE INFORMATION IN THIS DOCUMENT.*

*Complying with all applicable copyright laws is the responsibility of the user. Without limiting the rights under copyright, this Guide may be freely distributed without permission from Prism, as long as its content is unaltered, nothing is added to the content and credit to Prism is provided.*

*Prism Microsystems, Inc. may have patents, patent applications, trademarks, copyrights, or other intellectual property rights covering subject matter in this document. Except as expressly provided in any written license agreement from Prism Microsystems, Inc. the furnishing of this document does not give you any license to these patents, trademarks, copyrights, or other intellectual property.*

*The example companies, organizations, products, people and events depicted herein are fictitious. No association with any real company, organization, product, person or event is intended or should be inferred.*

*© 2014 Prism Microsystems, Inc. All rights reserved.*

*The names of actual companies and products mentioned herein may be the trademarks of their respective owners.*

# Table of Contents

Prepare collection point data .....	3
Create Collection Points.....	3
Prerequisites .....	3
To create collection points .....	3
Import Data Manually .....	10
Delete Collection Point.....	13
Command Line Arguments .....	15
Create Collection Point.....	15
Import Collection Point Data .....	15
Drop Collection Point.....	15
Event Logging.....	16
Generate Reports in v7.3 and below .....	17
Generate Reports in v7.5 and above .....	19

## Prepare collection point data

1. Apply the Update [ET76U14-1002.exe](#), [ET75U14-1002.exe](#), [ET73U13-101.exe](#), [ET72U12-101.exe](#) on Collection Master for v7.5, v7.3, v7.2 versions respectively.
2. Extract the file [ET7.6UtilityCreateETDb.zip](#), [ET7.5UtilityCreateETDb.zip](#), [ET7.3UtilityCreateETDb.zip](#), [ET7.2UtilityCreateETDb.zip](#) file on Collection Point (CP) system for v7.6, v7.5, v7.3, v7.2 versions respectively.
3. Copy [UtilityCreateETDb.exe](#) in the ...\[Prism Microsystems\Common](#) folder and run the executable file.

This utility creates [EventTracker.mdb](#), [EventTrackerData.mdb](#), [CollectionPointInfo.mdb](#), [EventTrackerAlerts.mdb](#) in '...\[Prism Microsystems\Common](#)' directory and creates/updates a log file '[CreateETDb.txt](#)'.

## Create Collection Points

### Prerequisites

- EventTracker Collection Master must be up and running.
- If importing data from a remote system, grant 'read only' permission on the folder where Collection Point data is present.

### To create collection points

1. Run the executable file [ET76U14-1002.exe](#), [ET75U14-1002.exe](#), [ET73U13-101.exe](#), [ET72U12-101.exe](#) on Collection Master for v7.6, v7.5, v7.3, v7.2 versions respectively.
2. In ...\[<Installdir>\Prism Microsystems\EventTracker](#) folder, run the executable file **Prism.EventTracker.Collection Point Tool.exe**.
3. Open the **EventTracker Collection Point Tool**.

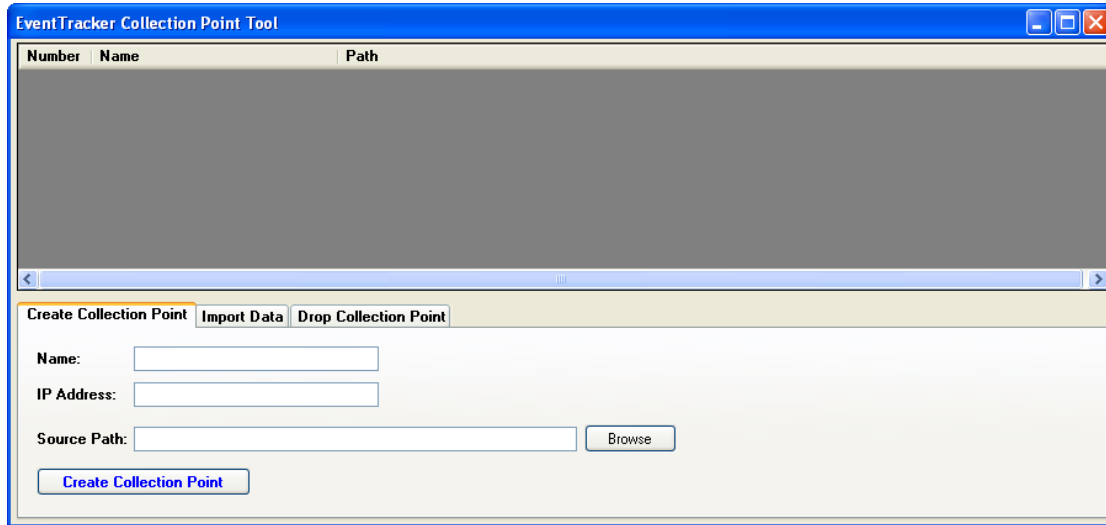


Figure 1

Field	Description
<b>Create Collection Point</b>	
<b>Name</b>	Type the Name of the Collection Point.
<b>IP address</b>	Type the IP address of the dummy Collection Point.
<b>Source Path</b>	Provide the source path where all data to be imported are stored in their respective subfolders namely Alerts, Archives, and Common. EventTracker Scheduler process periodically checks the source path and automatically imports data from the source folder.
<b>Import Data: To manually import Archives, Alerts, and Common.</b>	
<b>Drop Collection Point: To drop the selected Collection Point.</b>	

**NOTE:**

- ❖ **Import Data** and **Drop Collection Point** tabs are disabled when there is no '**Collection Point**' created. Please refer Figure 2 and 3 respectively.
- ❖ Real time alerts will not be transferred to the Collection Master in v7.6 if Manual Collection Point Utility is used.

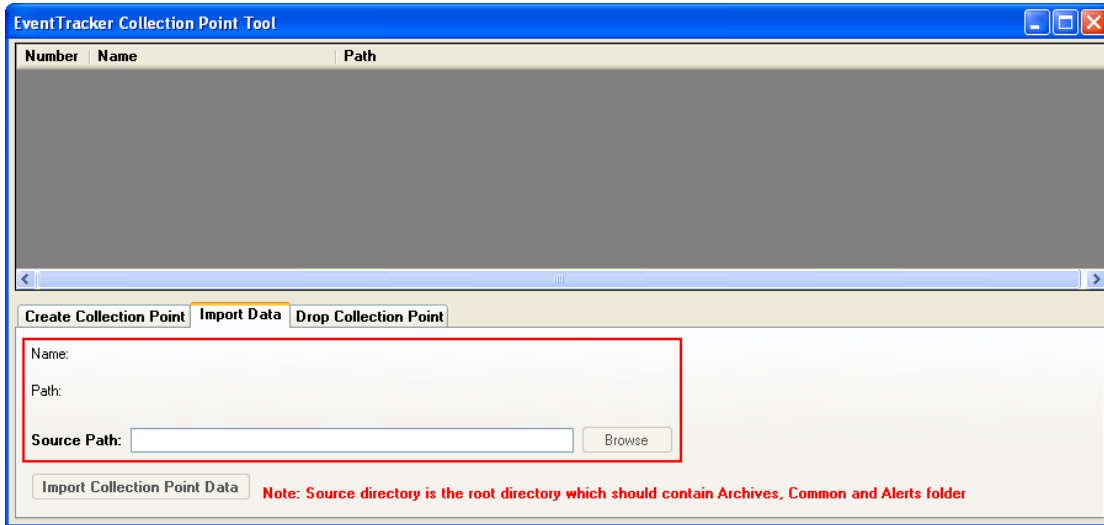


Figure 2

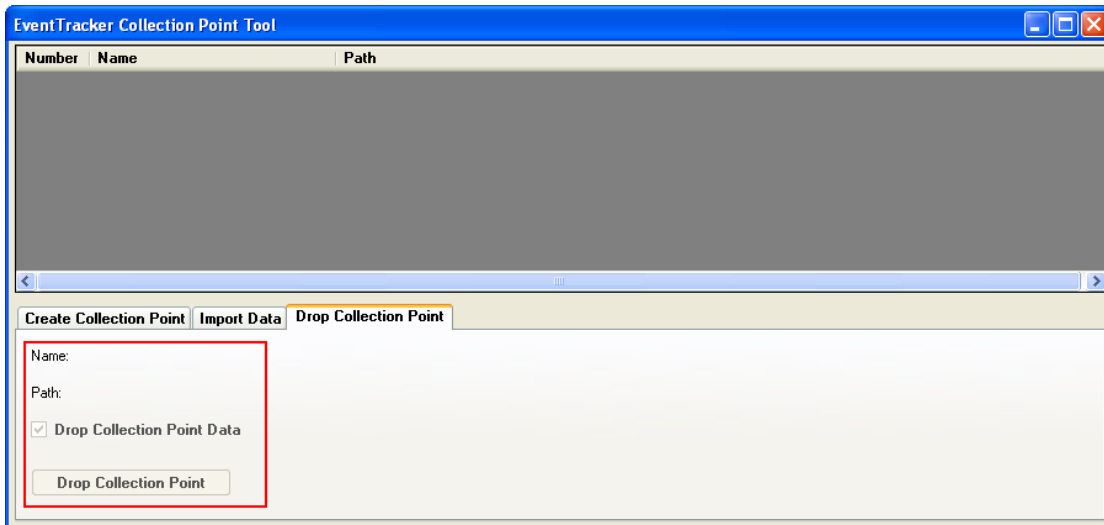


Figure 3

- 
4. Type **Name:** and **IP address:** of the Collection Point.  
Please refer Figure 4.

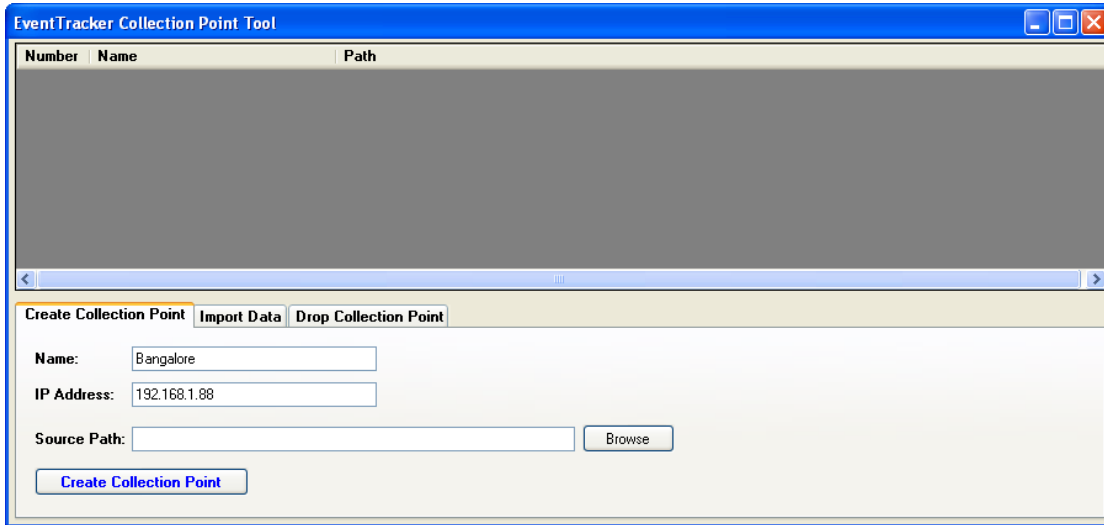


Figure 4

---

**NOTE:**

IP address should be valid format. If you type invalid IP address, error message is displayed.

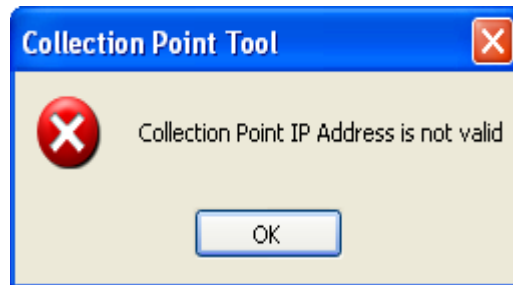


Figure 5

- 
5. Type the **Source Path:** or select the folder by clicking **Browse**.

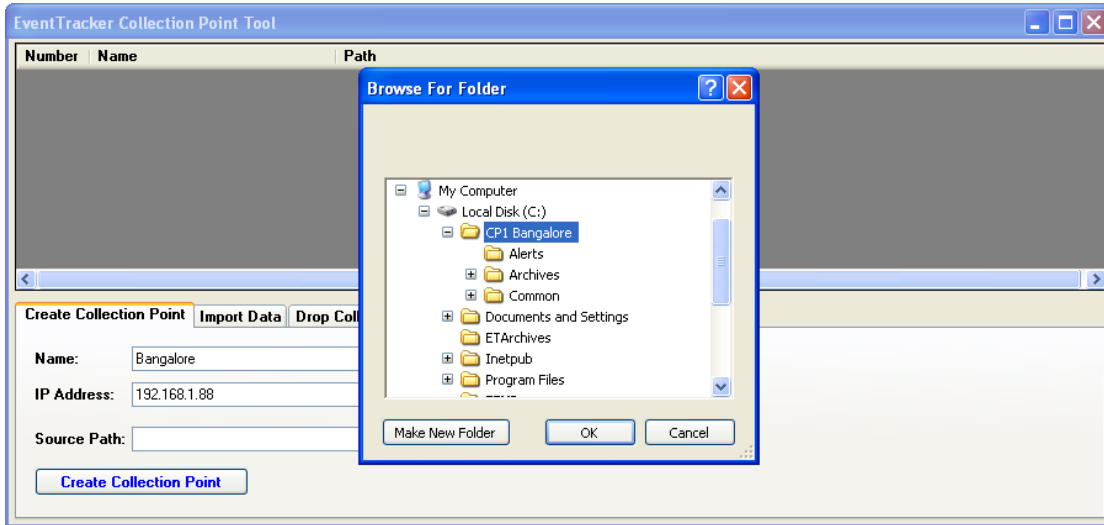


Figure 6

6. Click **OK**.

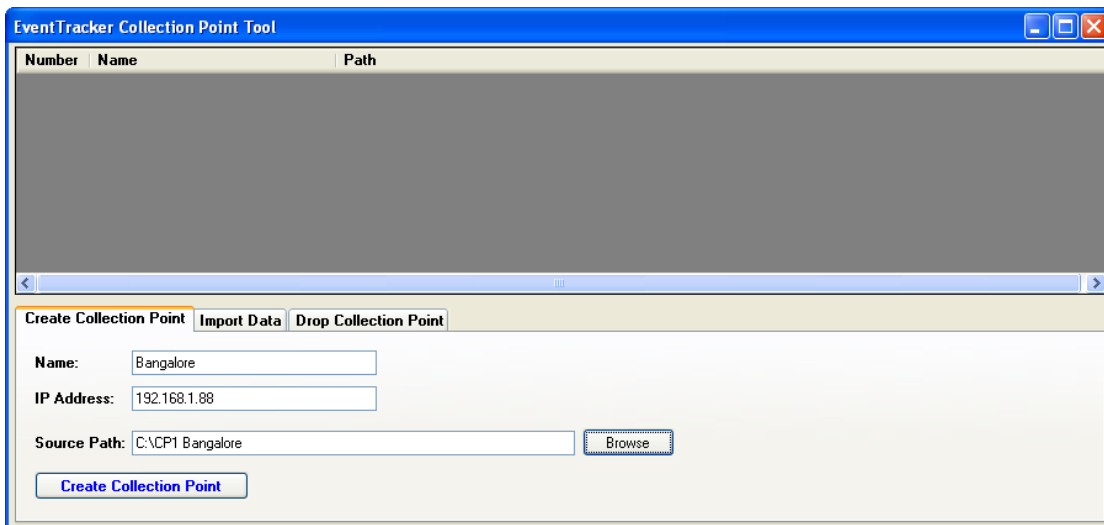


Figure 7

7. Click **Create Collection Point** button.

Message box is displayed on successful creation of Collection Points.



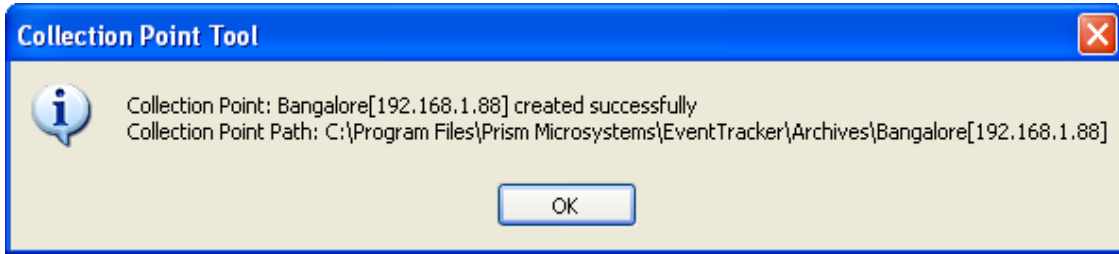


Figure 8

8. Click **OK**.

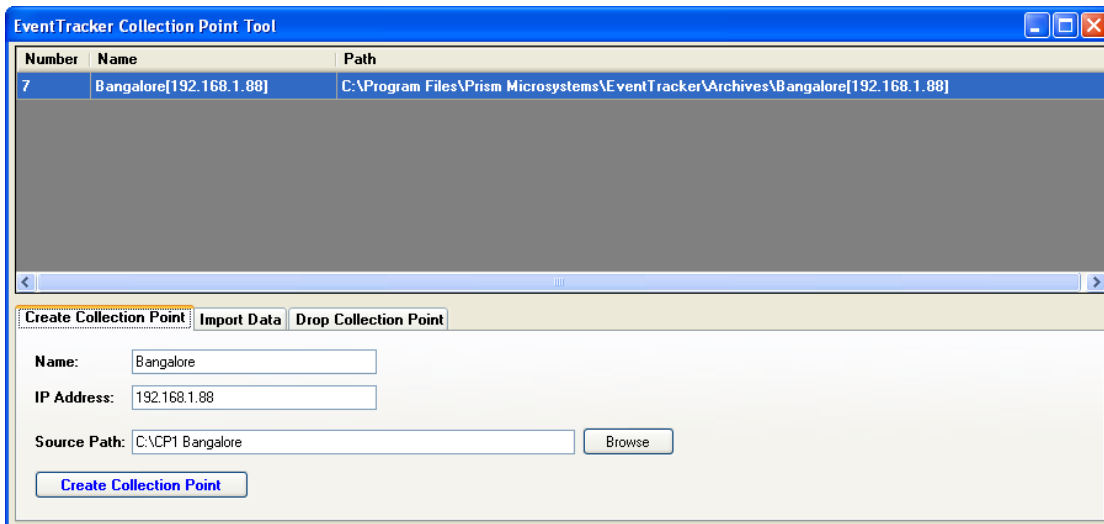


Figure 9

Folders for respective Collection Point(s) are created in the destination folder (Path).

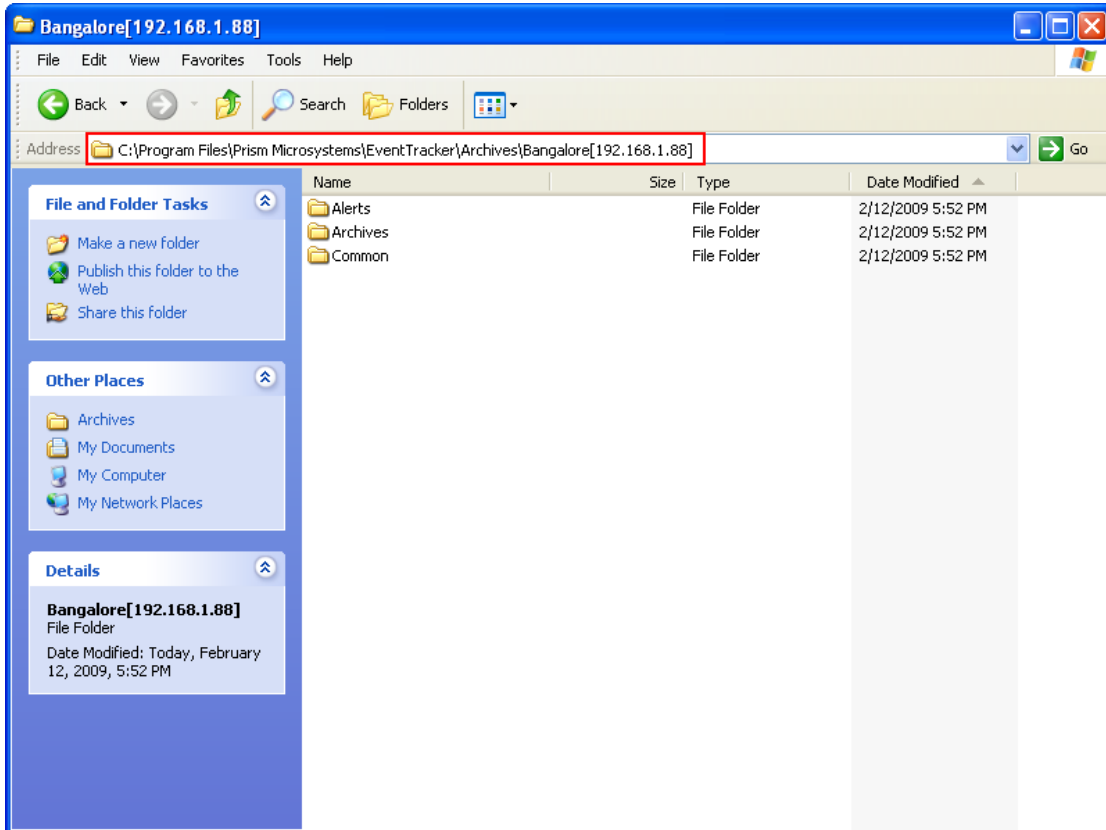


Figure 10

**NOTE:**

- Create a Shared folder. Create subfolders named 'Common', 'Alerts', 'Archives' under the newly created Shared folder.
- The 'Common' folder should contain the following files
  - ❖ [EventTracker.mdb](#),
  - ❖ [Collectionpointinfo.mdb](#)
- The 'Archives' folder should contain cab files.
- The 'Alerts' folder should contain [EventTrackerAlerts.mdb](#).

## Import Data Manually

1. In 'Collection Master' system, open **EventTracker Collection Point Tool**.
2. Click the **Import Data** tab.

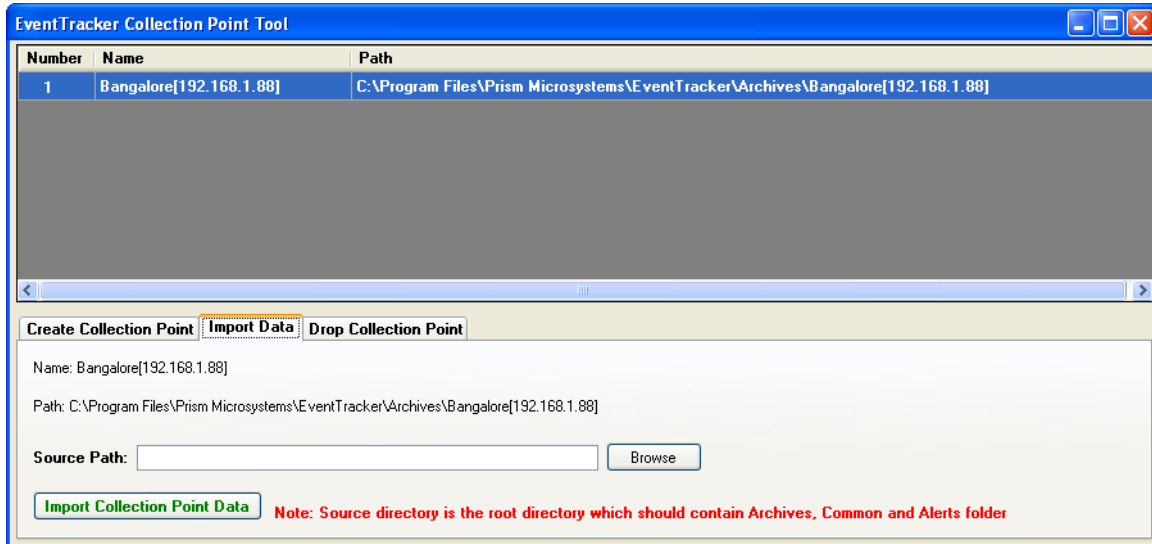


Figure 11

Data can be imported from any folder which contains the **Archives**, **Alerts** and the **EventTracker databases** present in the **Common** folder. Create a suitable folder and copy the **Archives**, **Alerts** and contents present in the 'Common' folder.

3. To import the data, click the **Browse** button and click the folder where the data is located.
4. Select the source folder.



Figure 12

5. Click **OK**.

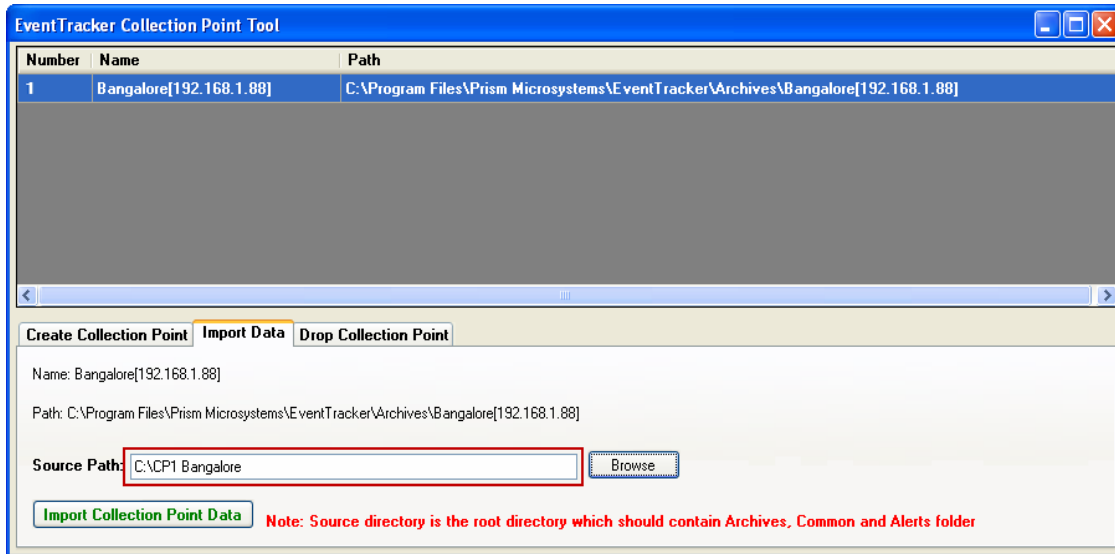


Figure 13

6. Click **Import Collection Point Data**.

A confirmation message box is displayed.

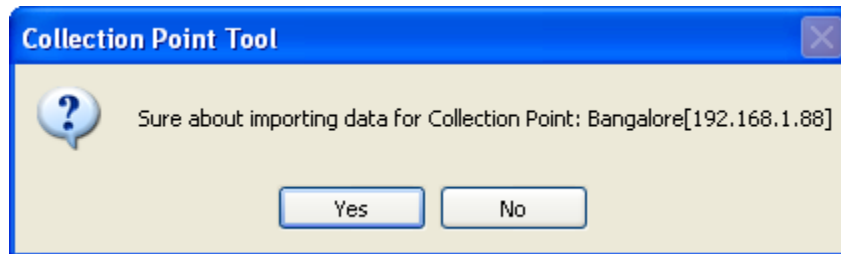


Figure 14

7. Click **Yes**.

Successful completion of import data is displayed.

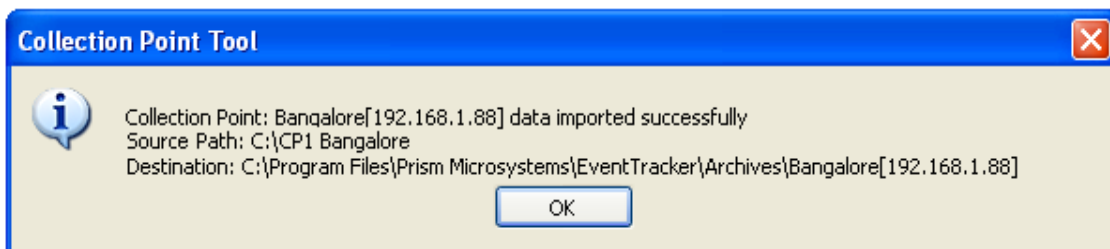


Figure 15

8. Click **OK**.

**NOTE:**

- When the user wants to import collection point data from the network, then make sure that the scheduler service runs in the user account.
- When the user is using an UNC (Universal Naming Convention) path, then the ET scheduler service should run in the user account instead of the local account.

# Delete Collection Point

1. Select the Collection Point in the top pane.
2. Click the **Drop Collection Point** tab.

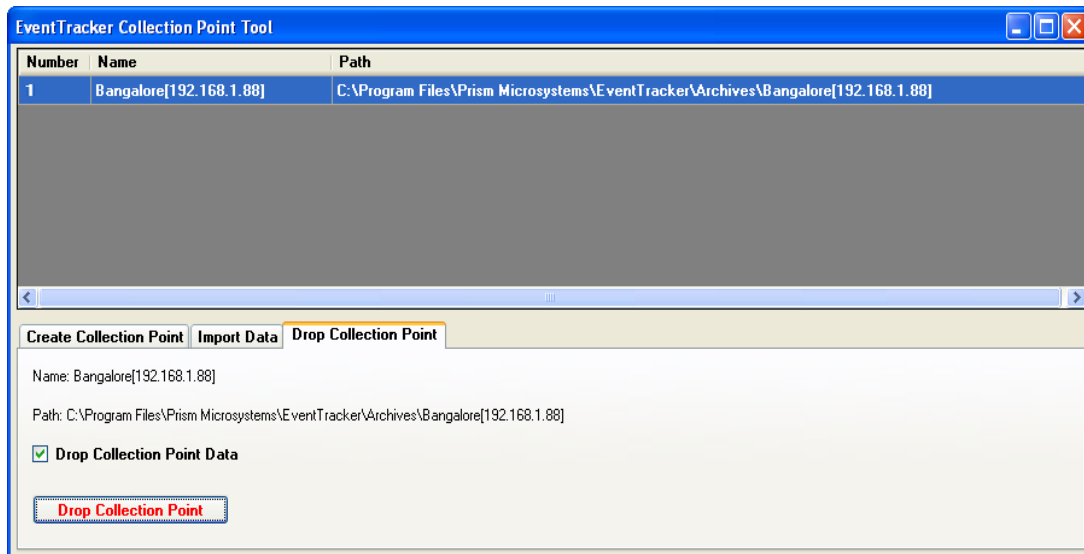


Figure 16

3. Select the **Drop Collection Point Data** to drop and delete the data folder (C:\Program Files\Prism Microsystems\EventTracker\Archives\Mumbai [192.168.1.19]).

A confirmation message box is displayed.

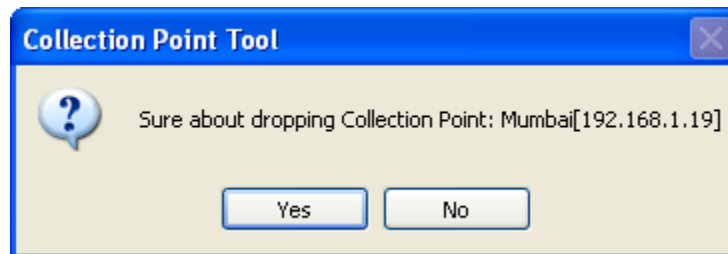


Figure 17

If the **Drop Collection Point Data** checkbox is not selected, then only the Collection Point entry will be deleted from the EventTracker Collection Point Tool, and the data will be retained.

4. Click **Yes** to continue.

Successful deletion of Collection Point is displayed.

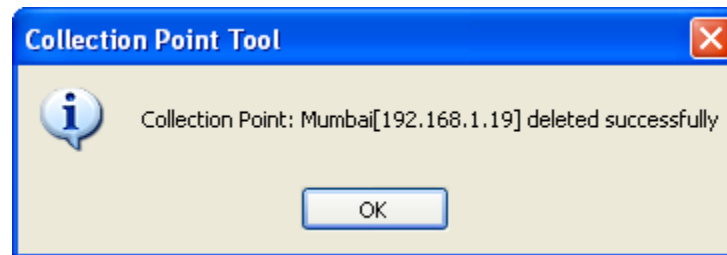


Figure 18

5. Click **OK**.

#### NOTE

If the CP is created manually using '**Manual collection point utility**', then the respective CP has to be dropped from the 'Manual collection point utility' only.

## Command Line Arguments

- Put quotation marks around the switch and the parameters
- Type the path of the directory where Collection Point Tool is located

### Create Collection Point

-c <Collection Point Name> <Collection Point IP Address>

```
"Prism.EventTracker.Collection Point Tool.exe" "-c" "Bangalore" "192.168.1.88"
```

### Import Collection Point Data

-i <Collection Point Full Name> <Collection Point Path> <Source Directory>

```
"...\Prism.EventTracker.Collection Point Tool.exe" "-i" "Bangalore [192.168.1.88]" "D:\Program Files\Prism Microsystems\EventTracker\Archives\ Bangalore [192.168.1.88]" "C:\ CP1 Bangalore"
```

### Drop Collection Point

-d <Collection Point Full Name> <Collection Point Path> <True/False>

```
"...\Prism.EventTracker.Collection Point Tool.exe" "-d" 'Mumbai [192.168.1.19]' "D:\Program Files\Prism Microsystems\EventTracker\Archives\ Mumbai [192.168.1.19]" "True"
```

Log file will be created under the executable path: [Prism.EventTracker.Collection Point Tool.log](#)



## Event Logging

EventTracker Collection Point Tool will log the following events into the Application log when a Collection Point is created successfully, data is imported (automated and manual) successfully, and a Collection Point is deleted successfully.

- ❖ Event Id = **3273**  
Collection Point: Bangalore [192.168.1.88] created successfully  
Source Path: C:\ CP1 Bangalore
  
- ❖ Event Id = **3274**  
Collection Point: Bangalore [192.168.1.88] data imported successfully  
Source Path: C:\ CP1 Bangalore  
Destination: C:\Program Files (x86)\Prism  
Microsystems\EventTracker\Archives\Bangalore [192.168.1.88]\Archives  
Import Start Time: 7/3/2014 5:53:50 AM  
File List:  
etar1404294989-514.cab  
etar1404195239-14505.cab  
etar1404283666-14505.cab  
etar1404289686-14505.cab  
etar1404290280-14505.cab  
etar1404294989-514.cab.xml  
etar1404195239-14505.cab.xml  
etar1404283666-14505.cab.xml  
etar1404289686-14505.cab.xml  
etar1404290280-14505.cab.xml  
C:\ CP1 Bangalore\Common\CollectionPointInfo.mdb  
C:\ CP1 Bangalore\Common\EventTracker.mdb  
C:\ CP1 Bangalore\Alerts  
Total Cabs Copied: 13  
Import End Time: 7/3/2014 5:53:51 AM
  
- ❖ Event Id = **3275**  
Collection Point: Mumbai [192.168.1.19] deleted successfully  
Drop Data: True

# Generate Reports in v7.3 and below

1. Log on to **EventTracker Enterprise**.
2. Click **Compliance / Security / Operations / My EventTracker**.
3. Click **Reports**.
4. Expand a node and select a report.  
Example: **Operations > Reports > Right click All Information Events > Click On Demand**.
5. From the shortcut menu, select **On Demand**.  
EventTracker displays the Reports Wizard.
6. Click **Next >>**.
7. Select the Chapters (if applicable), and then click **Next >>**.
8. Select the Categories (if applicable), and then click **Next>>**.
9. Select **Sites/Groups/Systems/Show all sites/All Systems**.

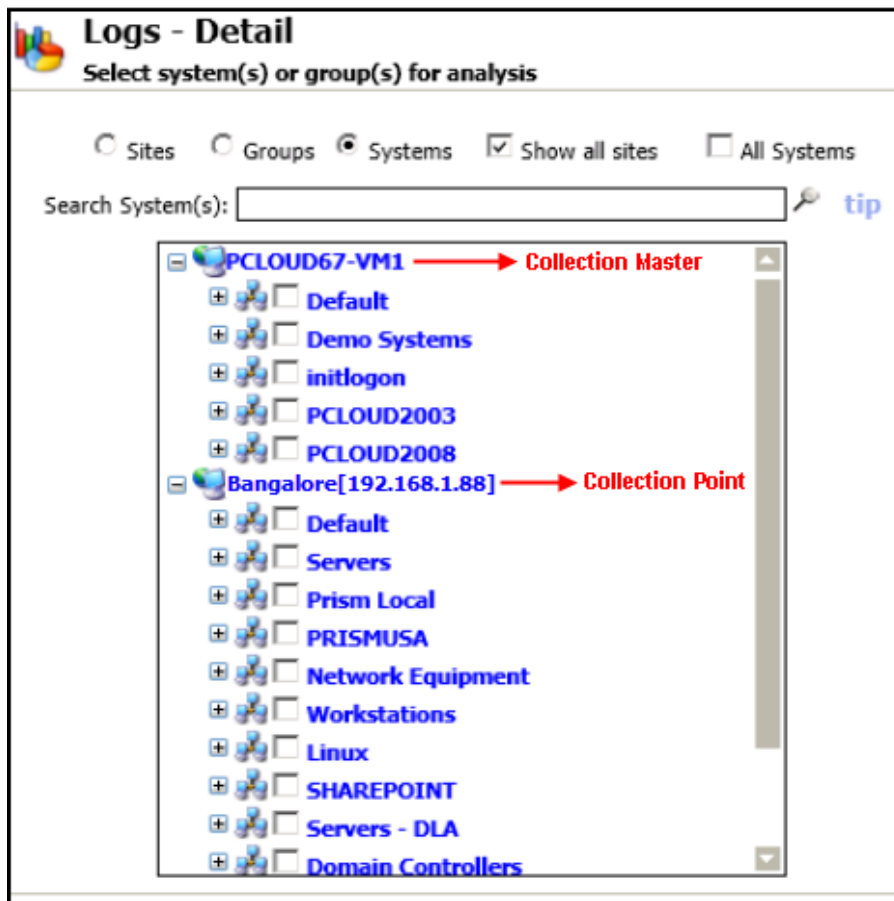


Figure 19

10. Click **Next >>**.
11. Set the period for which you want the report to be generated.  
Example: Select the report generation interval: Last 2 Days.
12. Select the **Export type** as **Quick View**.
13. Select the **Sort by** option.
14. Type appropriate **Refine, Filter** options, and then click **Next >>**.
15. Type the **Title, Header, Footer, and Description**.
16. Click **Next >>**.
17. Crosscheck the Disk cost analysis details.  
EventTracker disables the Publishing options.
18. Click **Next >>**.
19. Crosscheck the Analysis parameters.
20. Click **Generate Report**.  
EventTracker displays the generated report in the Power Viewer.
21. Click **Save to file** to export and save the report on your hard disk.  
EventTracker displays the 'Export Crystal' dialog box.
22. Select the export type from the **Export Type** drop-down list.
23. Click **Yes**.  
After saving the report, EventTracker displays the message box.
24. Click **OK**.
25. Click **Dashboard** in the **Actions** pane to view the report.  
EventTracker displays the generated report and its details on the Dashboard.

# Generate Reports in v7.5 and above

The newly created Collection Point will be listed in Reports Wizard. Hence the user can generate reports for this newly created CP.

- 1 Log on to **EventTracker Enterprise**, click the **Reports** menu, and then select **Dashboard** or **Configuration**.
- 2 Click the **New** button in **Dashboard** or **Configuration**.
- 3 Select any one of the reports in **Operations / Alphabetical** tab.
- 4 Expand a node and select a report (i.e. **All Information Events**).

Example:

In **Operations** tab, select **All Information Events**, and then select **On Demand**.

**All Information Events** is also available in **Alphabetical** tab.

- 7 Select **On Demand**, and then select **Next>>**.  
EventTracker displays the Reports Wizard.
- 8 Select **Sites/Groups/Systems/Show all sites/All Systems** accordingly.
- 9 Click **Next >>**.
- 10 Set the required **Interval, Format option** etc.
- 11 Select the required **Export type, Chart type**, and the **Sort by** options.
- 12 Click **Next>>**.
- 13 Enter the appropriate **Refine, Filter** options, and then click **Next >>**.
- 14 Enter the appropriate Title, Header, Footer, and Description, and then click **Next>>**.
- 15 Crosscheck the **Disk cost analysis** details.  
EventTracker disables the Publishing options.
- 16 Click **Next >>**.
- 17 Select **Override indexer** if required.
- 18 Crosscheck the Report parameters, and then click **Generate Report**.  
EventTracker displays the Summary of the generated report.
- 19 Select **Export** to export data.
- 20 Click the **Reports** menu, select **Dashboard** to view the report.  
EventTracker displays the generated report and its details on the Dashboard.