

Configure ET and ELC to access Archives
Reports on different Computer

Configuration Guide
EventTracker and EventLogCentral

Abstract

The purpose of this document is to help users to configure EventTracker and ELC to access EventTracker Archives & Reports if

- ELC and EventTracker are installed on the same computer and EventTracker Archives & Reports are stored in a different computer.
- ELC and EventTracker are installed on two different computers and EventTracker Archives & Reports are stored in the third computer.

The information contained in this document represents the current view of Prism Microsystems Inc. on the issues discussed as of the date of publication. Because Prism Microsystems must respond to changing market conditions, it should not be interpreted to be a commitment on the part of Prism Microsystems, and Prism Microsystems cannot guarantee the accuracy of any information presented after the date of publication.

This document is for informational purposes only. Prism Microsystems MAKES NO WARRANTIES, EXPRESS OR IMPLIED, AS TO THE INFORMATION IN THIS DOCUMENT.

Complying with all applicable copyright laws is the responsibility of the user. Without limiting the rights under copyright, this paper may be freely distributed without permission from Prism, as long as its content is unaltered, nothing is added to the content and credit to Prism is provided.

Prism Microsystems may have patents, patent applications, trademarks, copyrights, or other intellectual property rights covering subject matter in this document. Except as expressly provided in any written license agreement from Prism Microsystems, the furnishing of this document does not give you any license to these patents, trademarks, copyrights, or other intellectual property.

The example companies, organizations, products, people and events depicted herein are fictitious. No association with any real company, organization, product, person or event is intended or should be inferred.

© 2013 Prism Microsystems Corporation. All rights reserved. The names of actual companies and products mentioned herein may be the trademarks of their respective owners.

Table of Contents

- Introduction 3
- Example Scenario #1 3
 - On LEO, where EventTracker Archives and Reports are to be stored 3
 - On OBELIX, where EventTracker & ELC are installed 4
 - Configure EventVault Warehouse Manager 4
 - Configure Reports Console 4
- Modify EventTracker Services Log on Account..... 5
- Modify ELC Services Log on Account..... 9
 - Example Scenario #2 9
- Appendix 11

Introduction

Thank you for choosing EventLogCentral (ELC) an optional add-in component of EventTracker™. ELC is a secure Web-based user interface to manage event log data collected by EventTracker™.

This guide is designed as an easy reference for error free, and painless configuration experience.

Follow the instructions thoroughly. Missing any of these settings/steps might lead to incomplete or corrupt configuration.

Example Scenario #1

NOTE:

Only Active Directory users can perform this procedure.

Consider 'OBELIX' is the computer where EventTracker and ELC are installed. Designate a computer say 'LEO' to store EventTracker Archives and copies of generated reports.

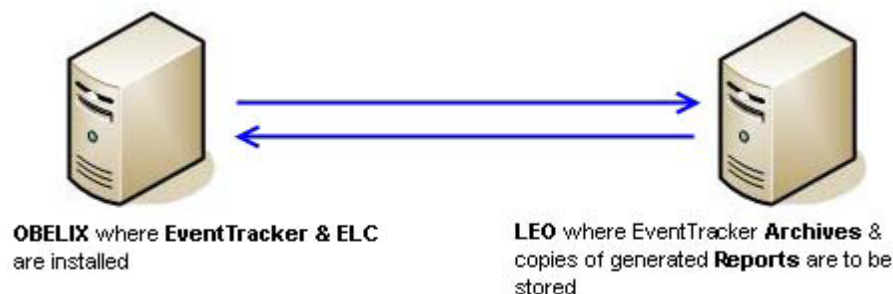


Figure 1

On LEO, where EventTracker Archives and Reports are to be stored

- 1 Create two new folders 'ETArchives' and 'ETReports'.
 - a. Copy the contents of Archives (... \Program Files \Prism Microsystems \EventTracker \Archives) folder in OBELIX to 'ETArchives' folder.

b. Copy the contents of Reports (... \Program Files \Prism Microsystems \EventTracker \Reports) folder in OBELIX to 'ETReports' folder.

- 2 Share the 'ETArchives' and 'ETReports' folders.
- 3 Grant 'Full Control' access sharing permission on these two folders to 'EventTracker Admin' Active Directory user group.

NOTE:

Had you created these two folders on a computer running Windows 2000 server then under **Security** tab, you need to grant 'Full Control' access permission on these two folders to 'EventTracker Admin' Active Directory user group.

On OBELIX, where EventTracker & ELC are installed

Configure EventVault Warehouse Manager

- 1 Double-click **EventVault Warehouse Manager** on the Control Panel.
- 2 Click **Configuration** on the toolbar.
EventTracker displays the Configuration window.
- 3 Type the UNC path '\\leo\ETArchives' in the **Vault Storage Folder** field.

NOTE:

Since EventTracker Archives and Reports are stored in LEO you are required to provide the UNC path.

- 4 Click **OK**.

Configure Reports Console

- 1 Double-click **Reports Console** on the Control Panel.
- 2 Click the **Tools** menu and then select the **Options** option.
Published Reports/Analysis tab is selected by default.

- 3 Type the UNC path '\\leo\ETReports' in the **Folder to keep the copies of generated reports** field.
- 4 You can also click the **Select** button to select the UNC path.

Modify EventTracker Services Log on Account

Configure 'EventTracker EventVault', 'EventTracker LogAnalyzer', 'EventTracker Receiver', 'EventTracker Reporter', 'EventTracker Scheduler', and 'Event Correlator' services to log on with any member of EventTracker Admin Active Directory user group. The EventTracker Admin Group in turn should be a member of 'Domain Admins' user group.

- 1 Open **Services.msc**.
- 2 Right-click EventTracker EventVault and from the shortcut menu, choose **Properties**.

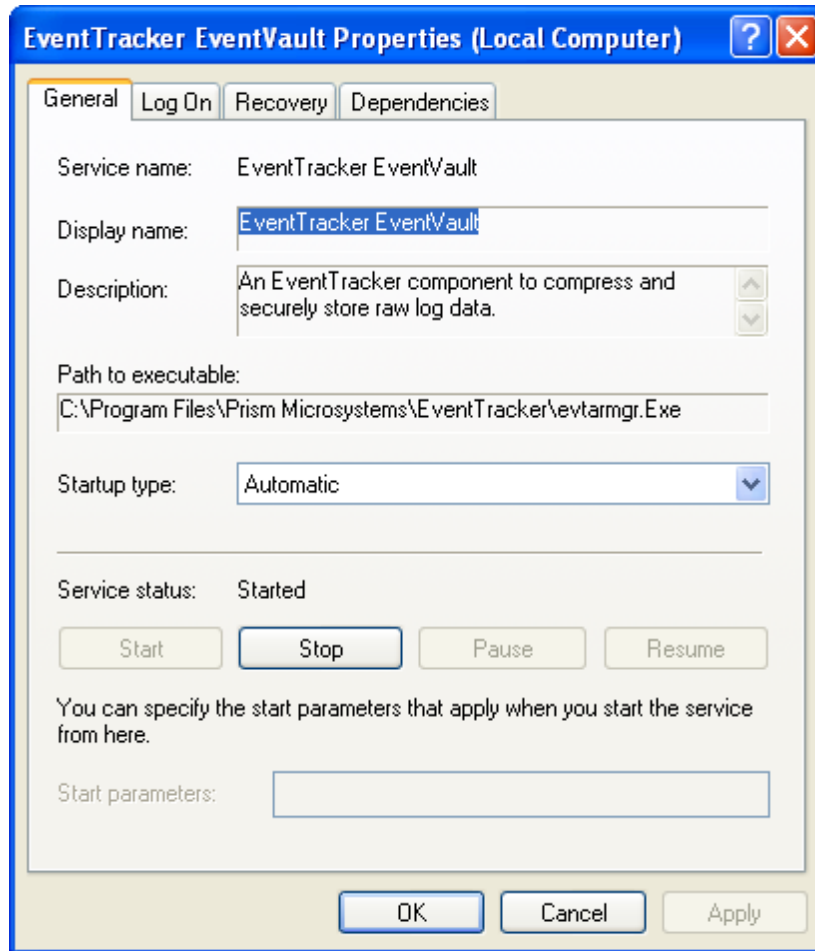


Figure 2

- 3 Click the **Log on** tab.

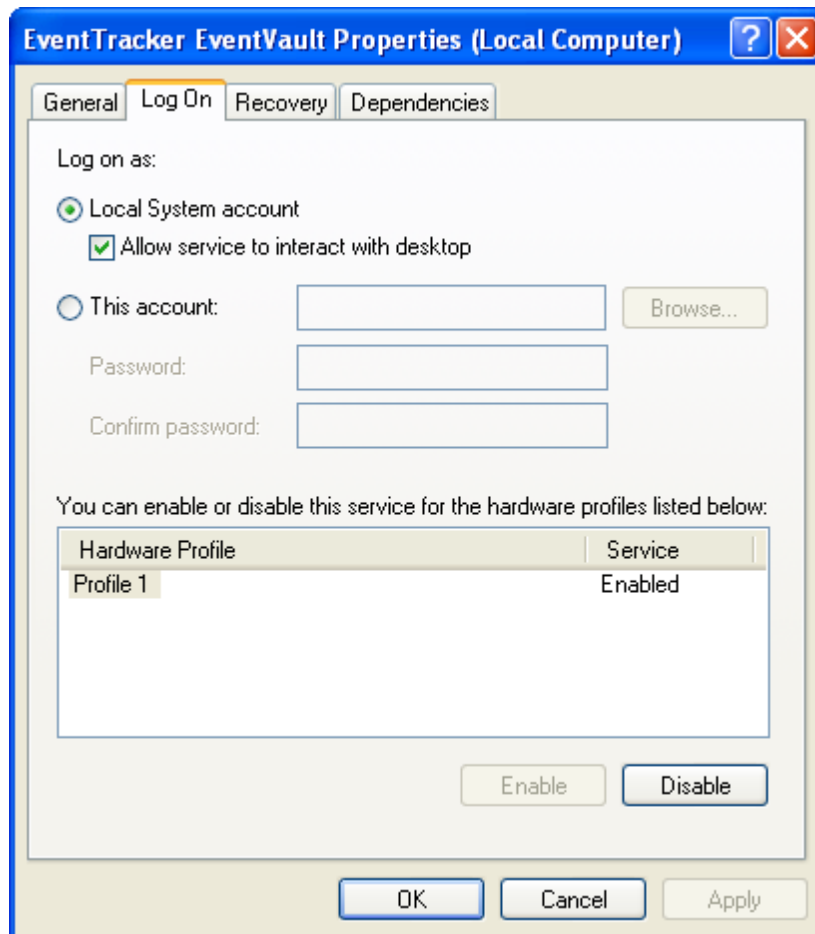


Figure 3

- 4 Select the **This account** option.
- 5 Type valid user name and password that belongs to EventTracker Admin Group, and then click OK.

Example: ETAdmin.

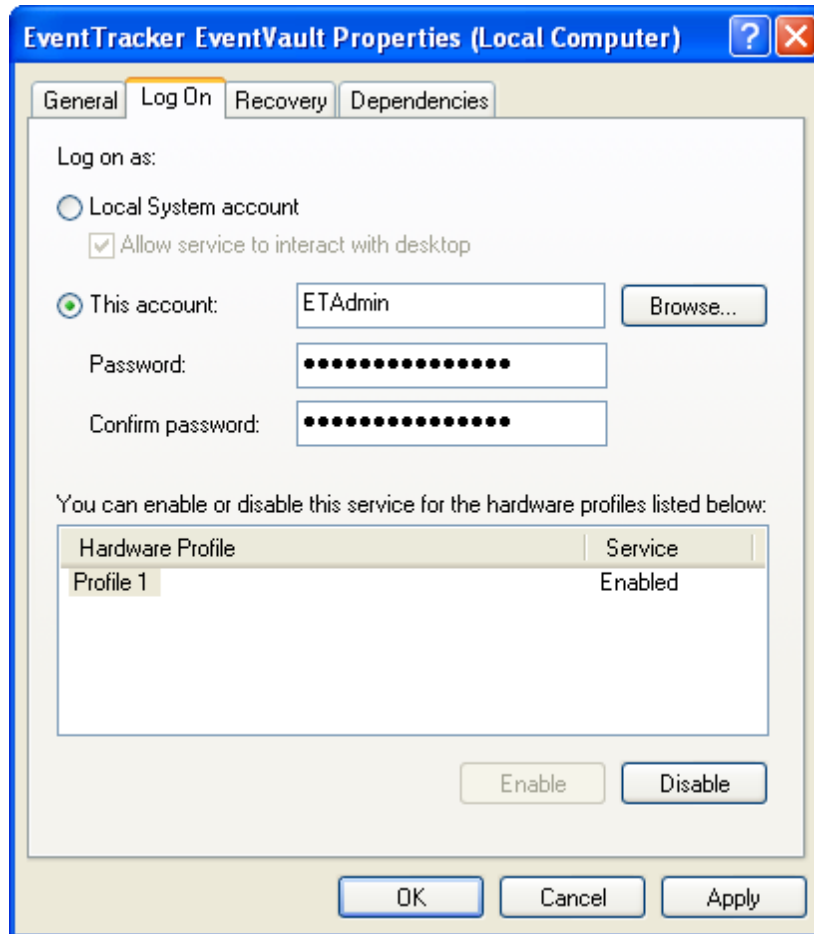


Figure 4

Follow the same procedures to configure Log on account for EventTracker LogAnalyzer, EventTracker Receiver, EventTracker Reporter, EventTracker Scheduler, and Event Correlator services respectively.

NOTE:

Do not change the Log on Account for **EventTracker Agent** and **EventTracker Alerter** services.

Modify ELC Services Log on Account

Similarly as explained in the previous section configure **ELCLogAnalysis**, **ELCLogReporter** and **ELCReceiver** services to log on with user credentials of any member of 'EventTracker Admin' Active Directory user group. The 'EventTracker Admin' user group in turn should be a member of 'Domain Admins' user group.

NOTE:

You can also change the services log on account through the EventLogCentral Configuration dialog. Click Start -> Programs -> Prism Microsystems -> EventLogCentral -> Configure EventLogCentral.

Example Scenario #2

Consider 'OBELIX' is the computer where EventTracker and 'CACOFONIX' is the computer where ELC are installed. Designate a computer say 'LEO' to store EventTracker Archives & copies of generated reports.

NOTE:

To install EventTracker and ELC on two different computers go through the documents found in <http://www.eventtracker.com/support/>

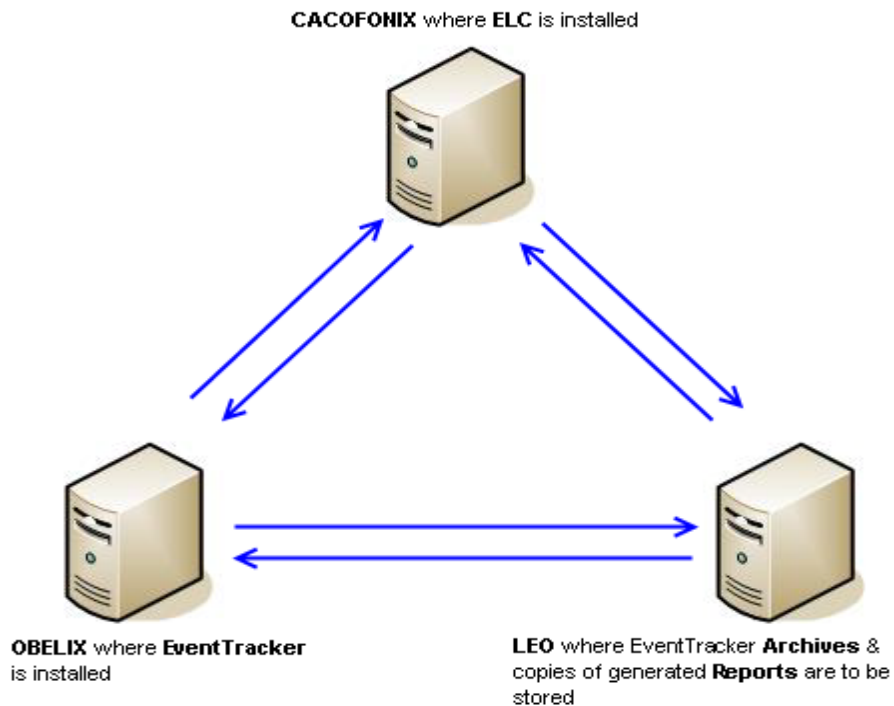


Figure 5

Other than the installation procedures, the aforementioned instructions hold true for this scenario too.

Appendix

The following applies to the use of 'EventLogCentral'

SOFTWARE LICENSE AGREEMENT

NOTICE -- READ THIS BEFORE DOWNLOADING, COPYING OR USING THE SOFTWARE.

INSTALLING AND USING THE SOFTWARE ACCOMPANYING THIS LICENSE INDICATES YOUR ACCEPTANCE OF THESE TERMS AND CONDITIONS. READ ALL OF THE TERMS AND CONDITIONS OF THIS LICENSE AGREEMENT PRIOR TO INSTALLING OR USING THE SOFTWARE. IF YOU DO NOT ACCEPT THESE TERMS, YOU MUST DELETE THE SOFTWARE FROM YOUR HARDWARE. PLEASE NOTE THAT YOU MAY NOT USE, COPY, MODIFY OR TRANSFER THE PROGRAM OR DOCUMENTATION OR ANY COPY, EXCEPT AS EXPRESSLY PROVIDED IN THIS AGREEMENT.

1. License: This software program (the "Program") and the accompanying on-line read-me and help files (the "Documentation") are licensed, not sold, to you by Prism Microsystems, Inc. ("Licensor"). The term "Program" shall also include any updates of the Program licensed to you by Licensor. Subject to the terms of this agreement, you have a non-exclusive and nontransferable right to use the Program and Documentation for non-commercial (e.g. not for resale or rental or the like), educational, evaluation or personal purposes only. You may use this Program on a single computer located in the United States and its territories or any other country to which this Program is legally exported. This Program is "in use" on a computer when it is loaded into the temporary memory (i.e. RAM) or installed into the permanent memory (e.g. hard drive, CD-ROM or other storage device) of that computer, except that a copy installed on a network server for the sole purpose of distribution to other computers is not "in use." If you permanently install the Program on the hard disk or other storage device of a computer (other than a network server) and you use that computer more than 80% of the time it is in use, then you may also use the Program on a portable or home computer. You agree to use your best efforts to prevent and protect the contents of the Program and Documentation from unauthorized disclosure or use. Licensor and its licensors reserve all rights not expressly granted to you. Licensor's licensors are the intended third party beneficiaries of this agreement and have the express right to rely upon and directly enforce the terms set forth herein.

2. Limitation on Use: You may not rent, lease, sell or otherwise transfer or distribute copies of the Program or Documentation to others. You may not modify or translate the Program or the Documentation without the prior written consent of Licensor. You may not reverse assemble, reverse compile or otherwise attempt to create the source code from the Program. You may not use Licensor's name or other trademarks or refer to Licensor or Licensor's products directly or indirectly in any papers, articles, advertisements, sales presentations, news releases or releases to any third party without the prior written approval of Licensor for each such use. You

may not release the results of any performance or functional evaluation of any Program to any third party without prior written approval of Licensor for each such release.

3. Backup and Transfer: You may make one copy of the Program for backup purposes if Licensor's copyright notice is included. You may not sublicense, assign, delegate, rent, lease, time-share or otherwise transfer this license or any of the related rights or obligations for any reason. Any attempt to make any such sublicense, assignment, delegation or other transfer by you shall be void. You may physically transfer the Program from one computer to another provided that you do not retain any copies of the Program, including any copies stored on a computer.

4. Copyright: The Program and related Documentation are copyrighted by Licensor and its licensors. You may not copy the Program (or this license) except to provide a backup copy and to load the Program into the computer as part of executing the Program. You may make one copy of the Documentation and print one copy of any on-line documentation or other materials provided to you in electronic form. Any and all other copies of the Program and any copy of the Documentation made by you are in violation of this license.

5. Ownership: You agree that the Program and Documentation belong to Licensor and its licensors. You agree that you neither own nor hereby acquire any claim or right of ownership to the Program and Documentation or to any related patents, copyrights, trademarks or other intellectual property. Licensor and its licensors retain all right, title and interest in and to the Documentation and all copies and the Program at all times, regardless of the form or media in or on which the original or other copies may subsequently exist. This license is not a sale of the original or any subsequent copy. All content accessed through the Program is the property of the applicable content owner and may be protected by applicable copyright law. This license gives you no rights to such content.

6. Term and Termination: This license is effective until terminated. You may terminate this license at any time by destroying the Program and Documentation and the permitted backup copy. This license automatically terminates if you fail to comply with its terms and conditions. You agree that, upon such termination, you will either destroy (or permanently erase) all copies of the Program and Documentation, or return the original Program and Documentation to Licensor, together with any other material you have received from Licensor in connection with the Program.

7. DISCLAIMER OF WARRANTY: LICENSOR AND ITS LICENSORS PROVIDE THE PROGRAM AND THE DOCUMENTATION "AS IS" WITHOUT WARRANTY OF ANY KIND EITHER EXPRESS, IMPLIED OR STATUTORY, INCLUDING BUT NOT LIMITED TO THE IMPLIED WARRANTIES OF MERCHANTABILITY AND FITNESS FOR A PARTICULAR PURPOSE. All risk of quality and performance of the Program and the Documentation is with the Licensee. Should the Program prove defective, you and not Licensor assume the entire cost of any service and repair. This disclaimer of warranty constitutes an essential part of this agreement.

8. LIMITATION OF REMEDIES: IN NO EVENT WILL LICENSOR OR ITS LICENSORS BE LIABLE FOR ANY INDIRECT DAMAGES OR OTHER RELIEF ARISING OUT OF YOUR USE OR INABILITY TO USE THE PROGRAM INCLUDING, BY WAY OF ILLUSTRATION AND NOT LIMITATION, LOST PROFITS, LOST BUSINESS OR LOST OPPORTUNITY, OR ANY SPECIAL, INCIDENTAL OR CONSEQUENTIAL OR EXEMPLARY DAMAGES, INCLUDING LEGAL FEES, ARISING OUT OF SUCH USE OR INABILITY TO USE THE PROGRAM, EVEN IF LICENSOR, ITS LICENSORS OR AN AUTHORIZED LICENSOR DEALER, DISTRIBUTOR OR SUPPLIER HAS BEEN ADVISED OF THE POSSIBILITY OF SUCH DAMAGES, OR FOR ANY CLAIM BY ANY OTHER PARTY.

9. Applicable Law: This license will be governed by the laws of the State of Maryland, without reference to conflicts of laws principles. The United Nations Convention on Contracts for the Sale of Goods does not apply to this license.

10. Export Controls: The Program and the underlying information and technology may not be downloaded or otherwise exported or re-exported (i) into (or to a national or resident of) Cuba, Iraq, Libya, Yugoslavia, North Korea, Iran, Syria or any other country to which the U.S. has embargoed goods; or (ii) to anyone on the U.S. Treasury Department's list of Specially Designated Nationals or the U.S. Commerce Department's Table of Deny Orders. By downloading or using the Program, you are agreeing to the foregoing and you represent and warrant that you are not located in, under the control of, or a national or resident of any such country or on any such list.

11. U.S. Government End Users: The Program is a "commercial item," as that term is defined at 48 C.F.R. 2.101 (Oct. 1995), consisting of "commercial computer software" and "commercial computer software documentation," as such terms are used in 48 C.F.R. 12.212 (Sept. 1995). Consistent with 48 C.F.R. 12.212 and 48 C.F.R. 227.7202-1 through 227.7202-4 (June 1995), all U.S. Government End Users acquire only those rights in the Program and the Documentation that are provided by this Agreement.

12. No Other Agreements: This Agreement constitutes the entire agreement between the parties with respect to the Program and the Documentation, and supersedes any other written or oral agreement.