

Port Configuration

Configure Port of EventTracker
Website

Abstract

This guide will help the end user to change the port of the Website, using the **Port Configuration** tool, which runs the EventTracker.

Scope

The configurations detailed in this guide are consistent with **EventTracker Enterprise** version 7.X and later.

Audience

The **Port Configuration** tool users are those who wish to change the port and monitor the websites and its corresponding applications.

The information contained in this document represents the current view of EventTracker. on the issues discussed as of the date of publication. Because EventTracker must respond to changing market conditions, it should not be interpreted to be a commitment on the part of EventTracker, and EventTracker cannot guarantee the accuracy of any information presented after the date of publication.

This document is for informational purposes only. EventTracker MAKES NO WARRANTIES, EXPRESS OR IMPLIED, AS TO THE INFORMATION IN THIS DOCUMENT.

Complying with all applicable copyright laws is the responsibility of the user. Without limiting the rights under copyright, this paper may be freely distributed without permission from EventTracker, if its content is unaltered, nothing is added to the content and credit to EventTracker is provided.

EventTracker may have patents, patent applications, trademarks, copyrights, or other intellectual property rights covering subject matter in this document. Except as expressly provided in any written license agreement from EventTracker, the furnishing of this document does not give you any license to these patents, trademarks, copyrights, or other intellectual property.

The example companies, organizations, products, people and events depicted herein are fictitious. No association with any real company, organization, product, person or event is intended or should be inferred.

© 2017 EventTracker Security LLC. All rights reserved. The names of actual companies and products mentioned herein may be the trademarks of their respective owners.

Table of Contents

Abstract	1
Scope	1
Audience	1
Introduction:	3
Pre-requisite:	3
How it operates?	3
How to configure the port?	3
Ports to be unblocked:	7
Rules that are checked for changing the port:	8

Introduction:

Port configuration utility is a simple tool that allows EventTracker users to change the port of the Website which runs the EventTracker.

Apart from this, the utility allows the end user to generate an excel file which will display the list of ports that are normally used by EventTracker products. With the use of the generated list, the Network administrators can unblock those ports through a firewall.

Pre-requisite:

- EventTracker v7.x or later should be installed.

How it operates?

When the application is launched, it checks if the EventTracker is installed or not. If it is not installed it exits with a message and looks up for the license to verify which component is licensed and installed. Once loaded, the user can simply select the Website/Application for which he/she needs to indicate a new port to use, from the drop down box offered.

The user can enter the new port for usage and click the “Apply” button. It will show the user a confirmation box and upon completing the confirmation successfully, the new port will be applied to the Website.

How to configure the port?

1. Click the-<Start>-button, Select-<All Programs>-, and then select-<Prism Microsystems>-.
2. Select-< EventTracker>- and then click on-< EventTracker Control Panel>-.
The **EventTracker Control Panel** is displayed.



Figure 1

3. Select-<Port Configuration>-.

The **Port Configuration** tool is displayed with the below mentioned components:

- The list of websites and applications.
- The current port on which the application/website is running.
- The **EventTracker version** installed on the title of the application.
- The Check box showing/hiding the ports which are most commonly used for EventTracker products.
- The **Help** box-< **System Info**>- which lists the system information.
- The **Help** box-< **About**>- listing the information about the tool.
- The URL-< **Secure IIS Web Server with SSL**>- that will navigate you to the SSL installation guide page.

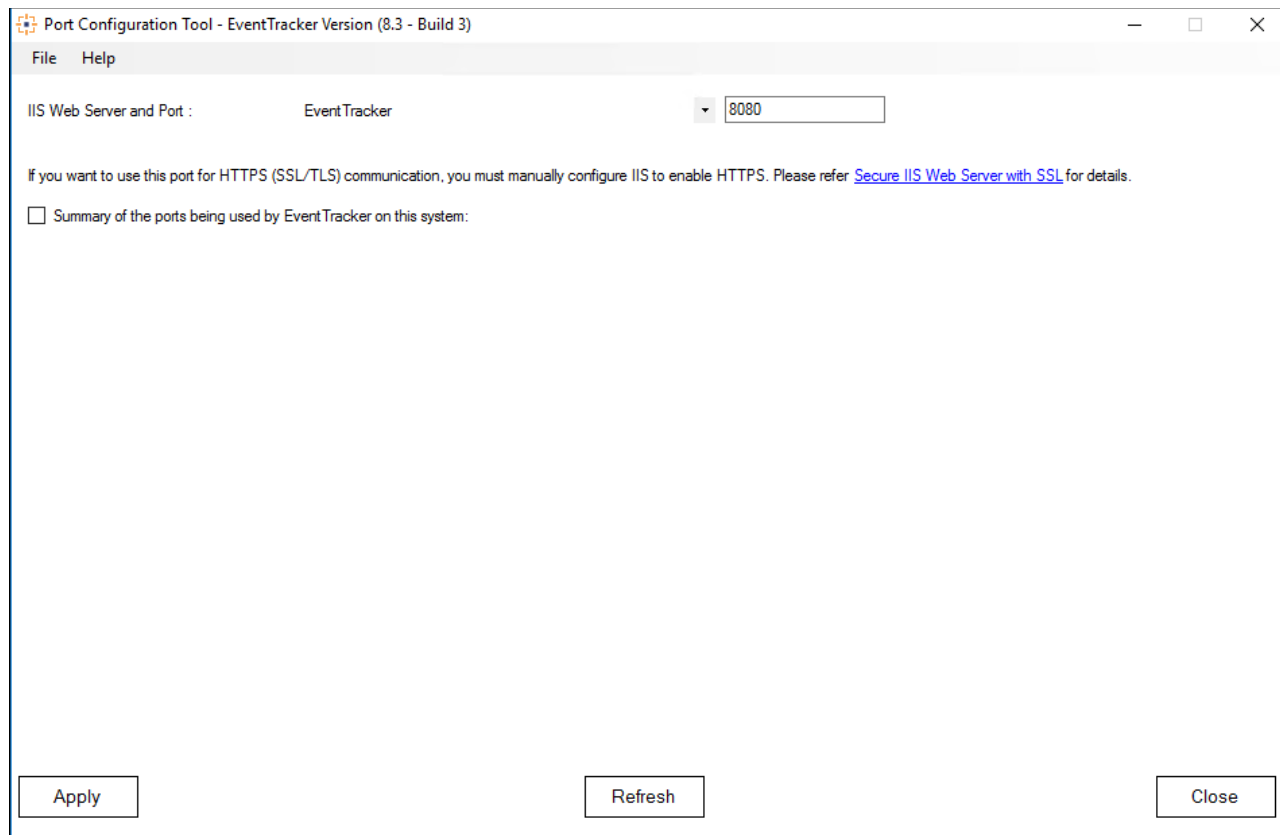


Figure 1

4. Select the **IIS Express Web Server** from the drop down box provided and then enter a new port number to use.

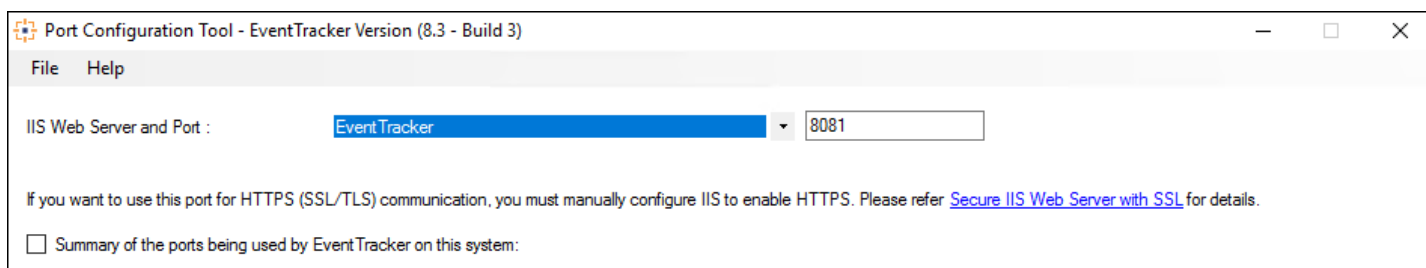


Figure 2

4. Select-< **Apply**>-.

A confirmation screen is displayed.

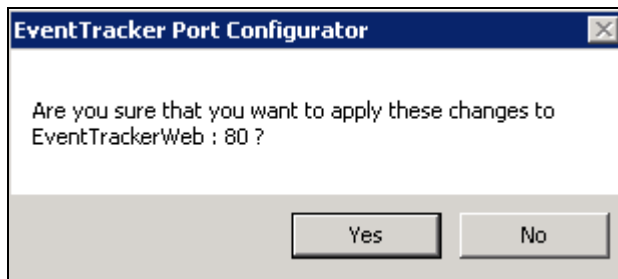


Figure 3

5. Confirm by selecting-<Yes>-.

The new port is applied to the website and a success message is displayed.

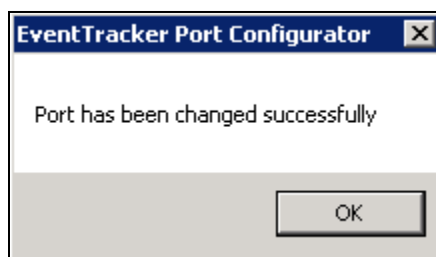


Figure 4

PLEASE NOTE:

- Once the port number is changed, the Website is restarted to ensure that the changes have been accepted.
- The internet shortcut URL also changes to point to the new Port number. This helps the end users in using the desktop shortcut URL to launch the EventTracker Website.
- At any given point of time, if the user clicks on the “**Refresh**” button from **Port Configuration Tool**, then the latest configuration gets loaded for viewing.

Ports to be unblocked:

For extracting and displaying the summary of the ports being used by EventTracker on this system, select the check box “**Summary of the ports being used by EventTracker on this system**” from **Port Configuration Tool**. It will display the virtual collection point ports and also the master collection ports. The summary details of the ports that are being used by the EventTracker on the system, as shown in the figure below:

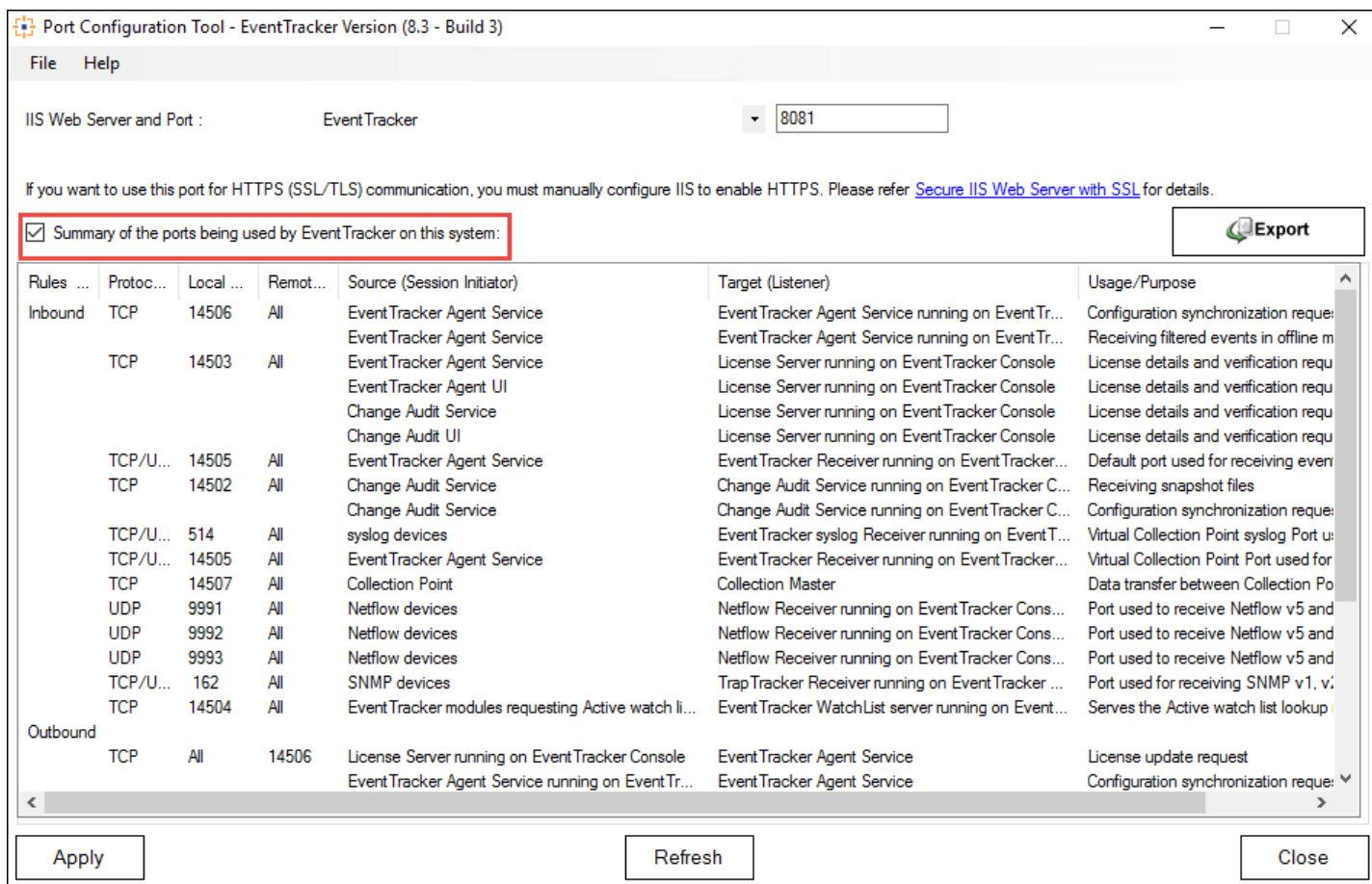


Figure 5

- Select the “**Export**” button from **Port Configuration Tool** for extracting the summary of the ports being used by EventTracker applications to an excel file. This can further be used by the Network administrators for unblocking the ports on their firewall.

Sample Report:

A	B	C	D	E	F	G
Inbound	TCP	14506	All	EventTracker Agent Service	EventTracker Agent Service running on EventTracker Console	Configuration synchronization request
				EventTracker Agent Service	EventTracker Agent Service running on EventTracker Console	Receiving filtered events in offline mode
	TCP	14503	All	EventTracker Agent Service	License Server running on EventTracker Console	License details and verification request
				EventTracker Agent UI	License Server running on EventTracker Console	License details and verification request
				Change Audit Service	License Server running on EventTracker Console	License details and verification request
	TCP/UDP	14505	All	Change Audit UI	License Server running on EventTracker Console	License details and verification request
				EventTracker Agent Service	EventTracker Receiver running on EventTracker Console	Default port used for receiving events
	TCP	14502	All	Change Audit Service	Change Audit Service running on EventTracker Console	Receiving snapshot files
				Change Audit Service	Change Audit Service running on EventTracker Console	Configuration synchronization request
	TCP/UDP	514	All	syslog devices	EventTracker syslog Receiver running on EventTracker Console	Virtual Collection Point syslog Port used for receiving
	TCP/UDP	14505	All	EventTracker Agent Service	EventTracker Receiver running on EventTracker Console	Virtual Collection Point Port used for receiving
	TCP	14507	All	Collection Point	Collection Master	Data transfer between Collection Point and Console
	UDP	9991	All	Netflow devices	Netflow Receiver running on EventTracker Console	Port used to receive Netflow v5 and v9 flow records
	UDP	9992	All	Netflow devices	Netflow Receiver running on EventTracker Console	Port used to receive Netflow v5 and v9 flow records
	UDP	9993	All	Netflow devices	Netflow Receiver running on EventTracker Console	Port used to receive Netflow v5 and v9 flow records
TCP/UDP	162	All	SNMP devices	TrapTracker Receiver running on EventTracker Console	Port used for receiving SNMP v1, v2c and v3 Trap messages	
TCP	14504	All	EventTracker modules requesting Active watch list lookup	EventTracker WatchList server running on EventTracker Console	Serves the Active watch list lookup requests.	
Outbound	TCP	All	14506	License Server running on EventTracker Console	EventTracker Agent Service	License update request
				EventTracker Agent Service running on EventTracker Console	EventTracker Agent Service	Configuration synchronization request
				EventTracker Agent UI	EventTracker Agent Service	Configuration management
				EventTracker Scheduler running on EventTracker Console	EventTracker Agent Service	SCAP benchmark assessment request
				EventTracker Receiver running on EventTracker Console	EventTracker Agent Service	Agent health check and version request

Figure 7

Please note that in case there is no license for a particular component(s), then that component(s) will not be displayed in the UI above.

Rules that are checked for changing the port:

1. Ports **1-1024**, except **80** and **443** are not allowed to be specified since these are reserved ports.
2. Port number should be between **1** and **65535**.
3. Port number specified should not be in use by IIS Server for other web sites.
4. Port number specified should not be in use by any other executable files.