

# Configuring Session Timeout in IIS

# About the document

The document explains the settings to be done in IIS for session timeout. These are the recommended settings. It is not recommended to extend the session infinitely as this may lead to unstable application behavior.

## Table of Contents

Configure Session Timeout in IIS 7.X.....	3
Configure Session Timeout in IIS 6.....	7

# Configure Session Timeout in IIS 7.X

**NOTE:** For Windows 7, Windows Server 2008, Windows Server 2008 R2, Windows Vista, the version of IIS will be IIS 7.X.

1. Click **Start >> All Programs >> Administrative Tools >> Internet Information Services (IIS) Manager**.

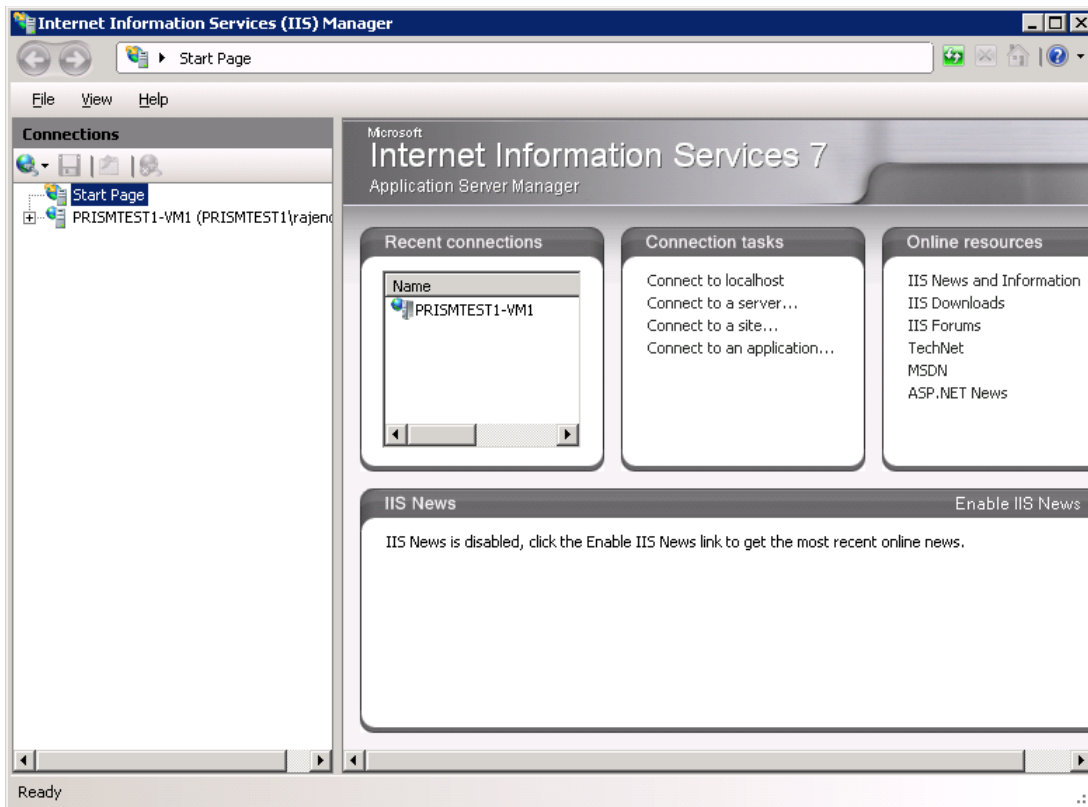


Figure 1

2. Expand domain/server name, and then click **Application Settings**.

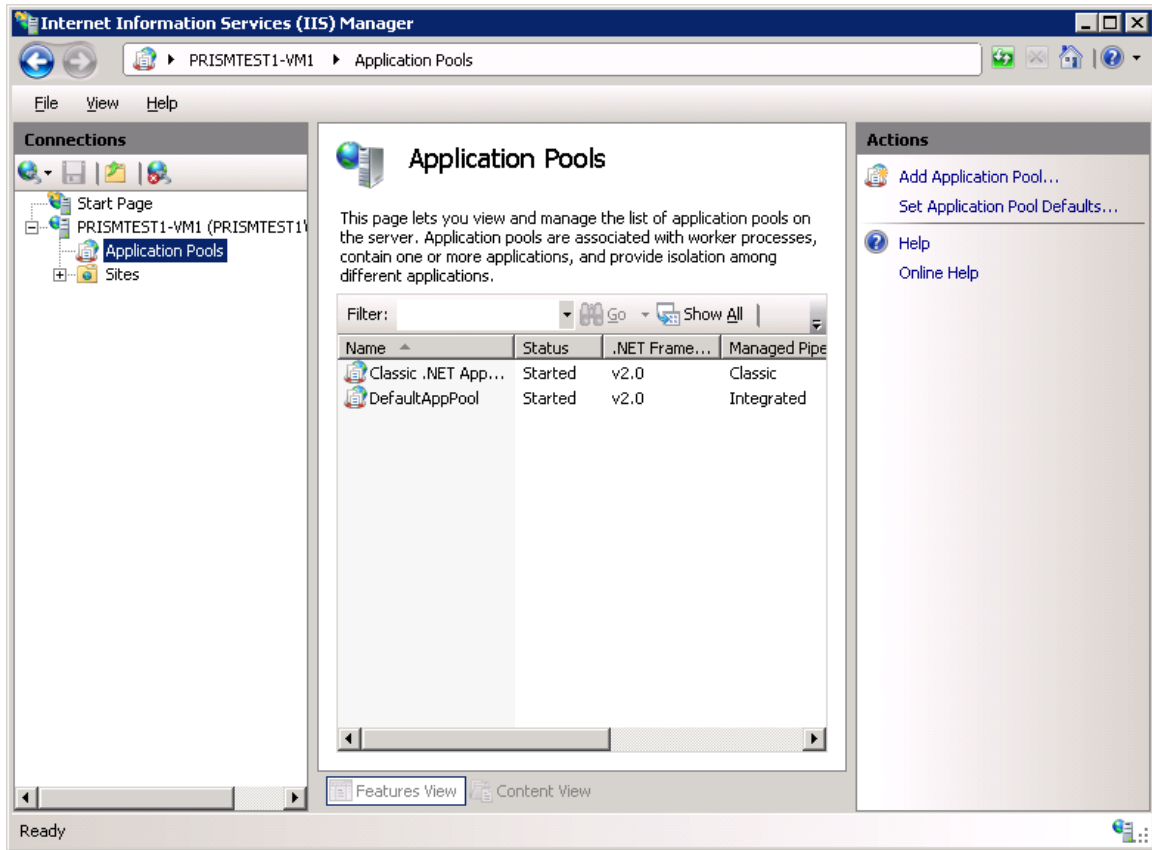


Figure 2

3. In 'Application Pools', right click **Default AppPool**, and then select **Advanced Settings**.

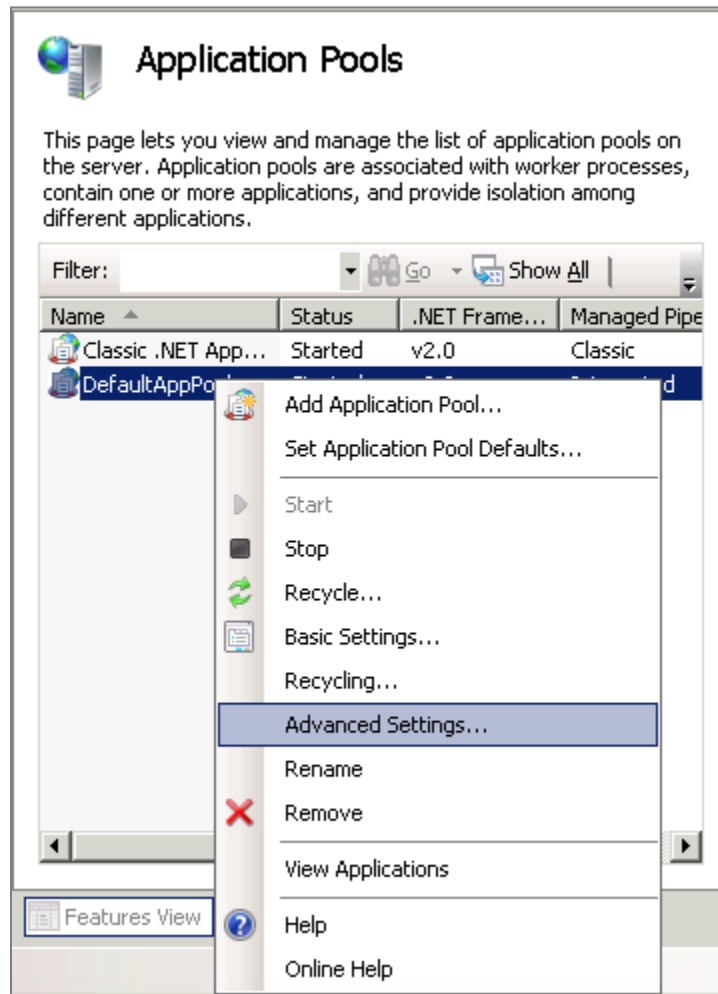


Figure 3

4. In **Advanced Settings** dialog box, set the value for **Idle Time-out(minutes)** to '720'.

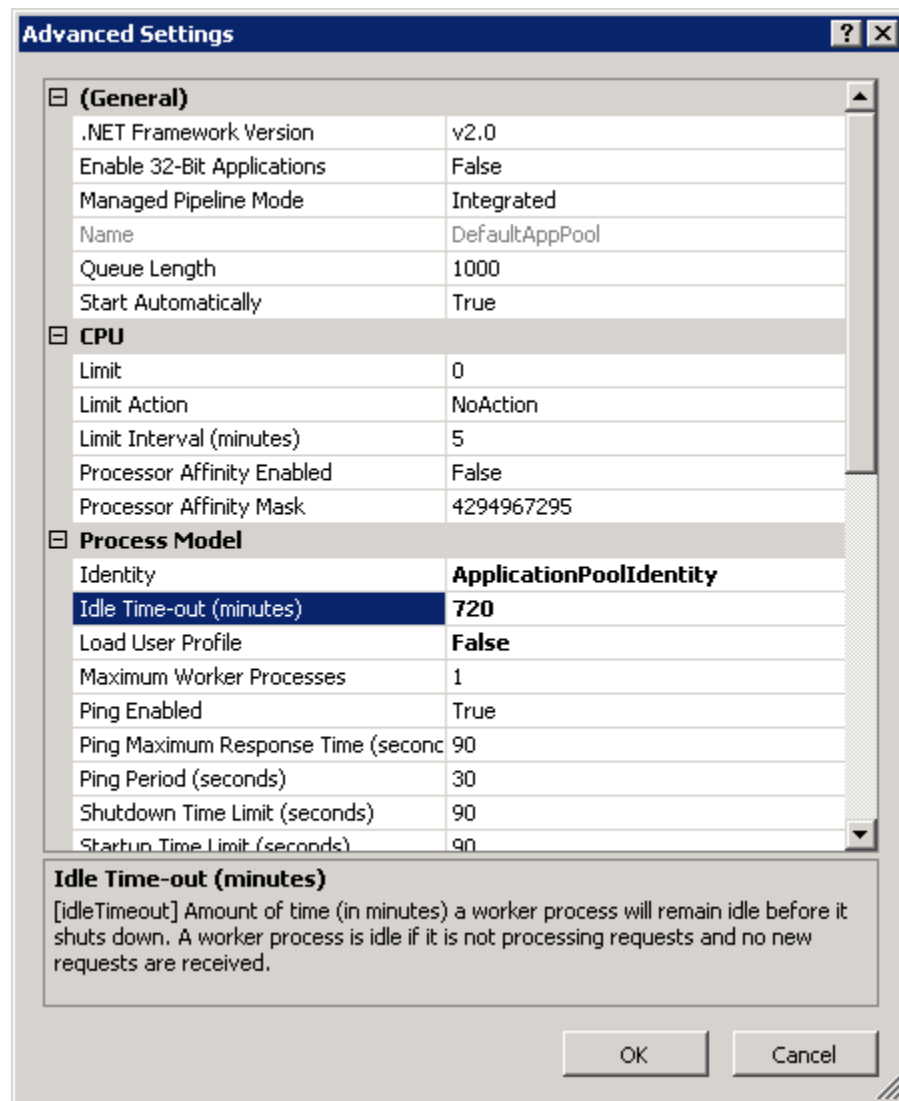


Figure 4

5. Click the **OK** button.
6. Right click the **Command prompt**, and select **Run as Administrator**.
7. Type the `iisreset` command, and press the **Enter** button.

# Configure Session Timeout in IIS 6

**NOTE:** For Windows Server 2003, Windows Server 2003 R2, Windows XP, the version of IIS will be IIS 6.

1. Click **Start >> All Programs >> Control Panel >> Administrative Tools >> Internet Information Services (IIS) Manager**.

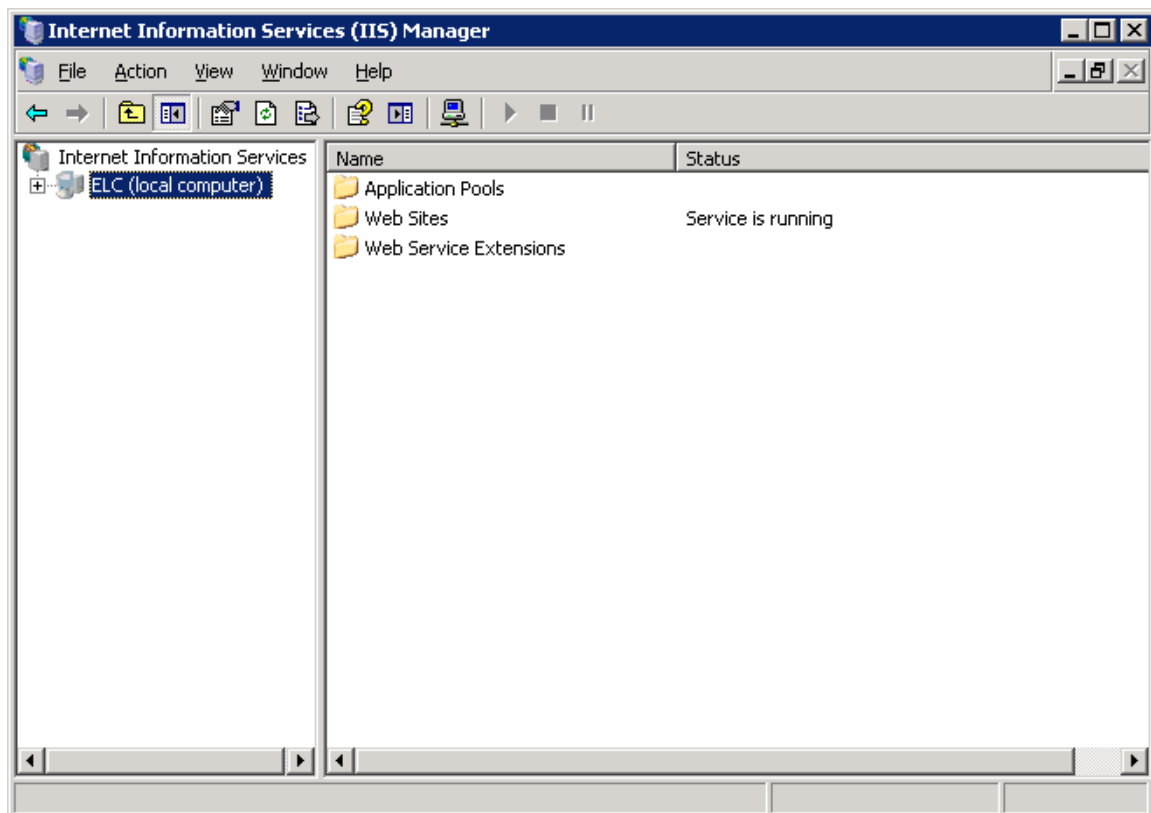


Figure 5



2. Double click **Application Pools**.

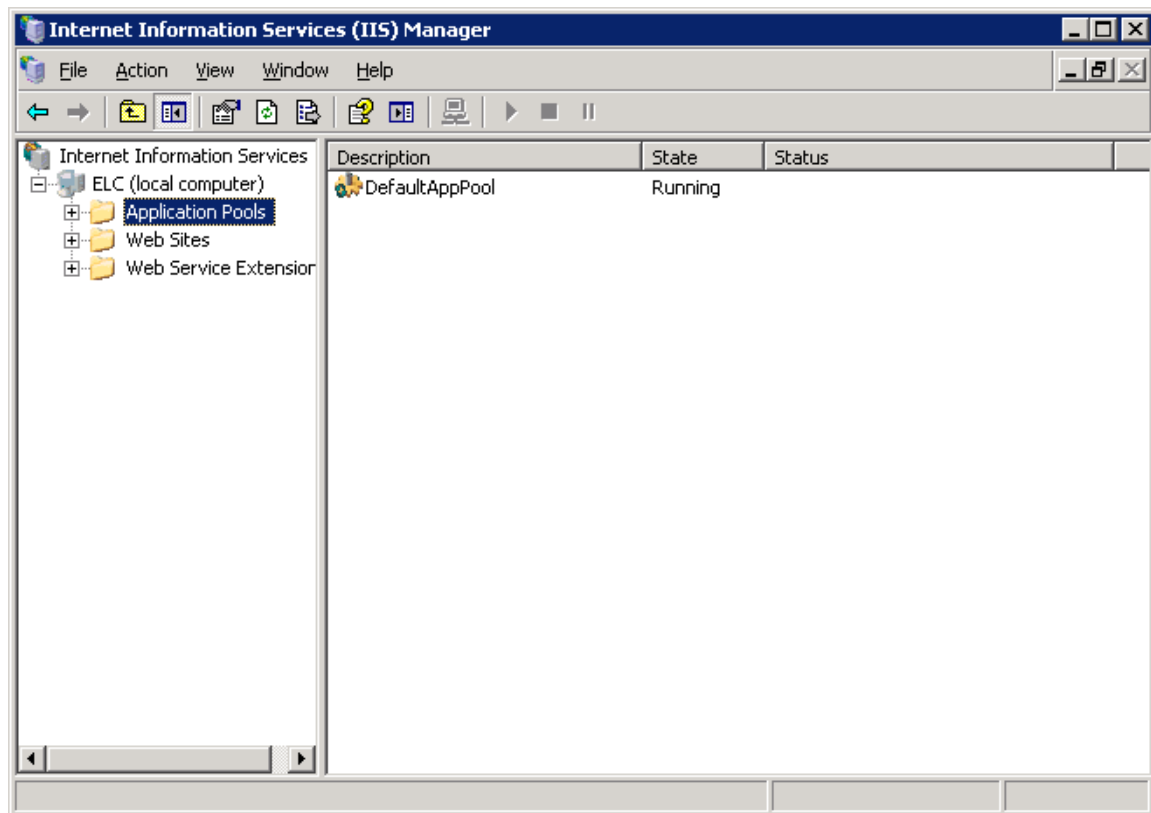


Figure 6

3. Right click **Default AppPool**, and then select **Properties**.

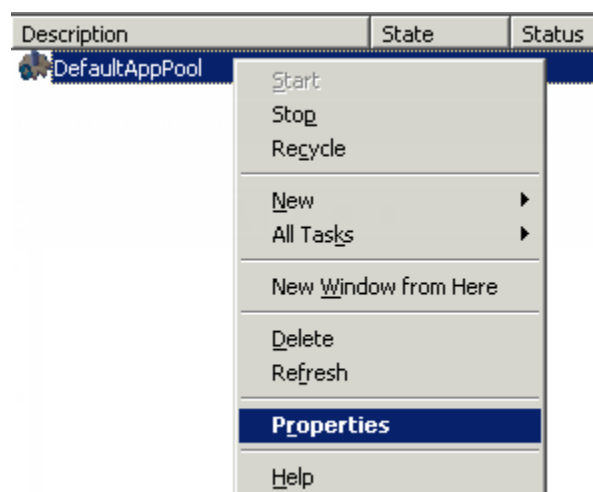


Figure 7

IIS 6 displays **Default AppPool Properties** dialog box.

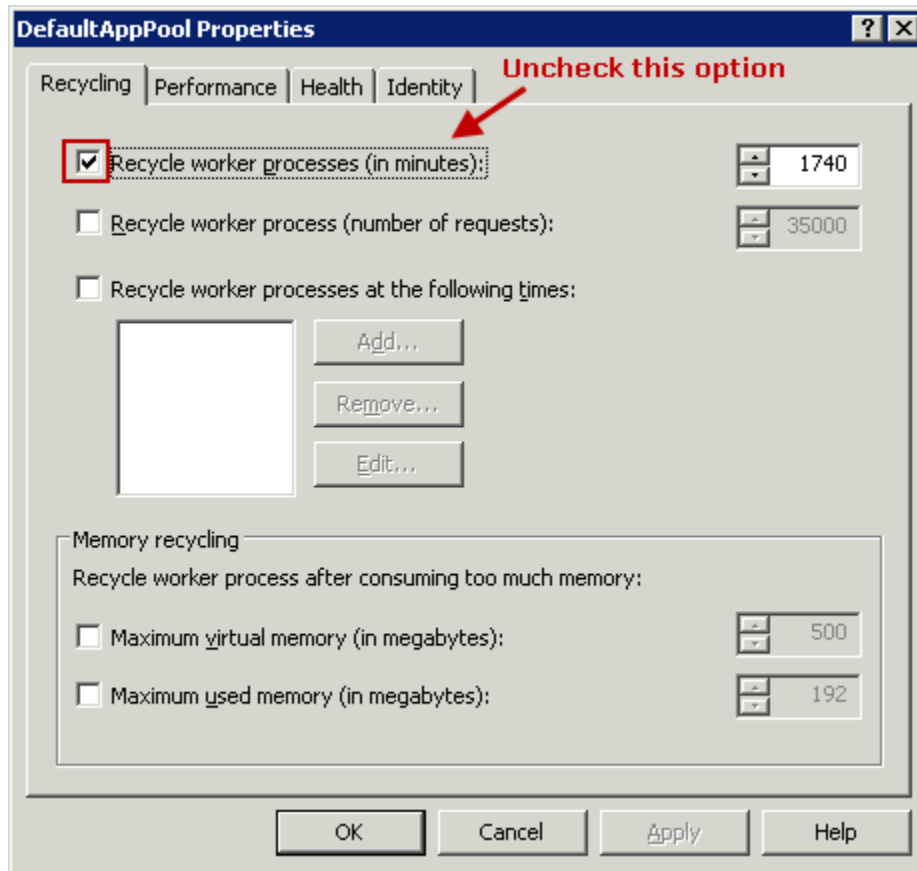


Figure 8

4. Uncheck the **Recycle worker process(in minutes)** option, if it is already checked.

5. Click the **Performance** tab.

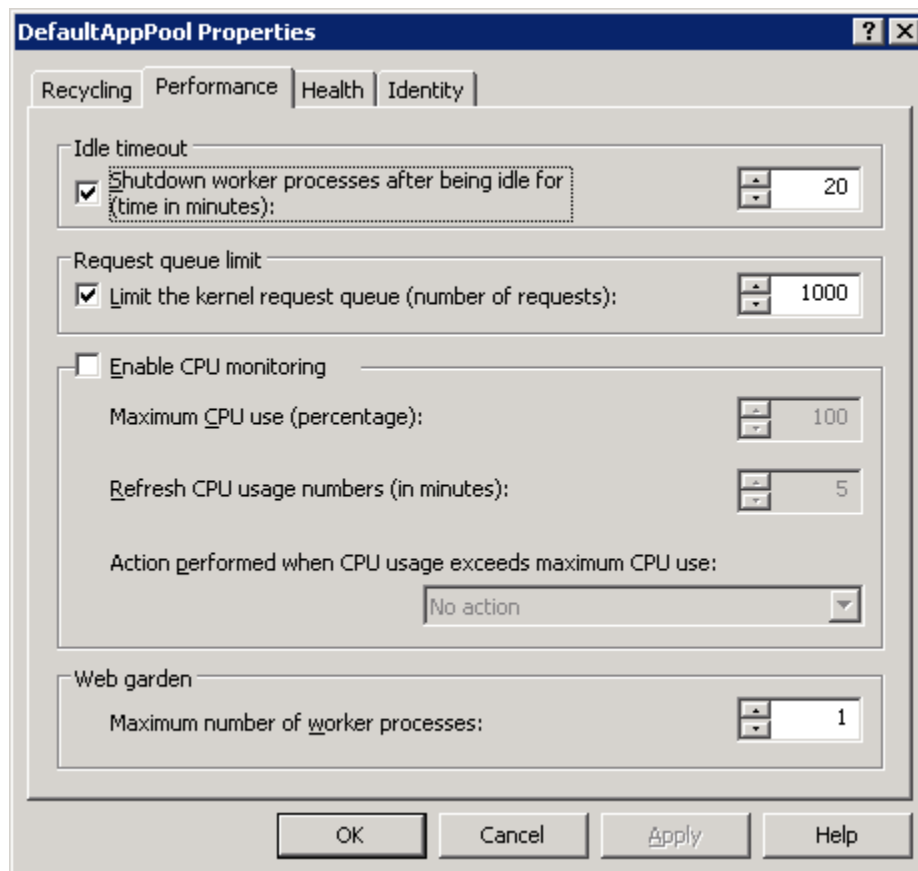


Figure 9

6. In **Idle timeout** pane, set the **Shutdown worker process after being idle for (time in minutes)** value to **720**.

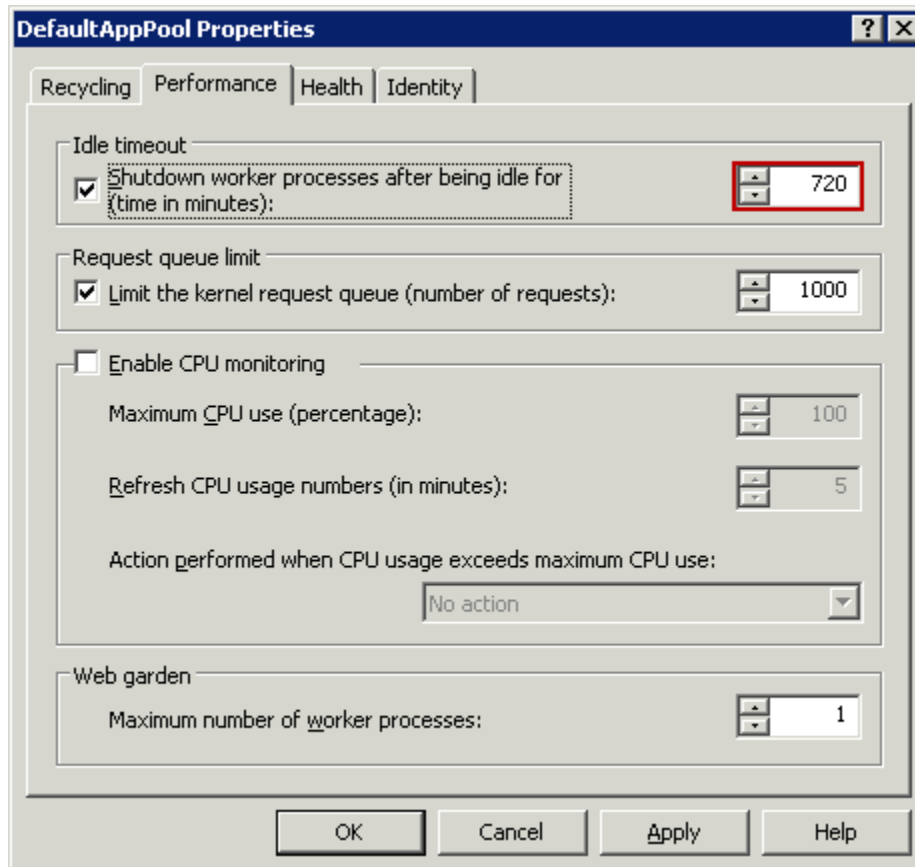


Figure 10

7. Click the **Apply** button, and then click the **OK** button.
8. Launch the command prompt, and then run the `iisreset` command.