

EventTracker Windows syslog *Installation Guide*

Introduction

This document is prepared to help user(s) to install EventTracker Syslog. EventTracker syslog can be installed on any Windows machine (XP/Win7/2003/2008 R2) and acts as a license manager and central configuration manager. In EventTracker syslog, you can also configure, upgrade, or uninstall the agents.

Table of Contents

EventTracker Windows syslog – Manager Installation	3
EventTracker Windows syslog – Agent Installation	10

EventTracker Windows syslog – Manager Installation

1. Launch the **etwSyslogRel72.exe** file.
EventTracker displays InstallShield Wizard.



Figure 1

2. Click the **Next** button

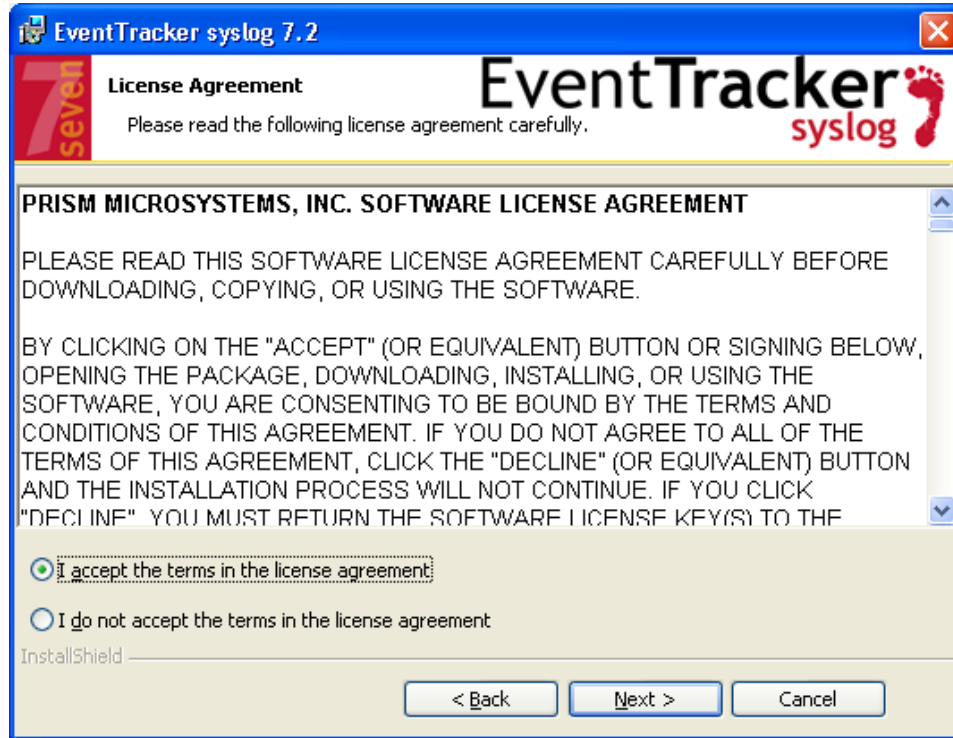


Figure 2

3. Click **I accept the terms in the license agreement** option, and then click the **Next** button.

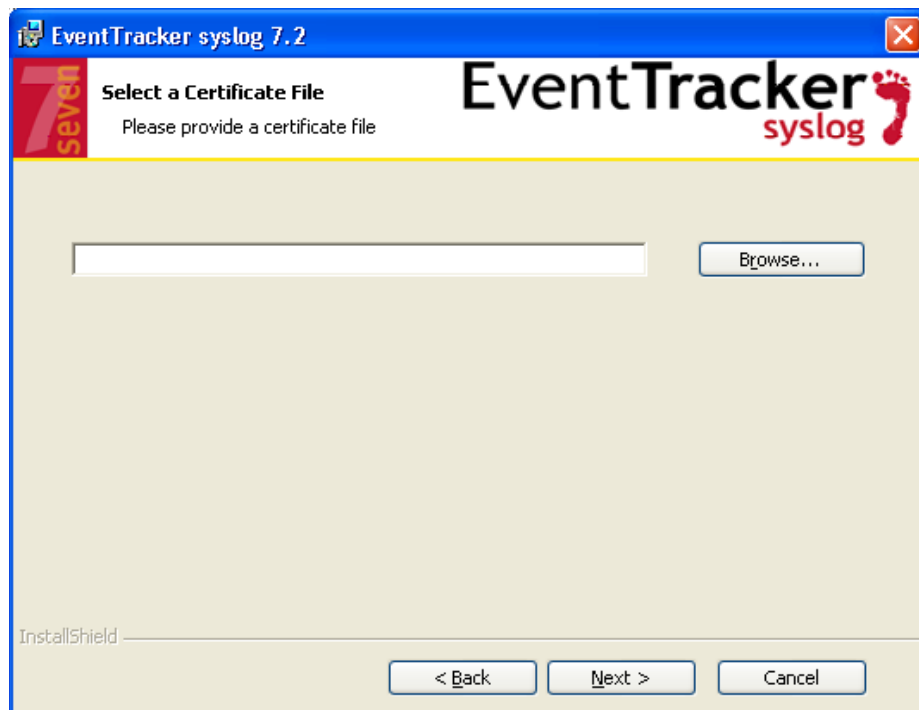


Figure 3

4. Click the **Browse** button, locate the certificate path, and then click the appropriate certificate.

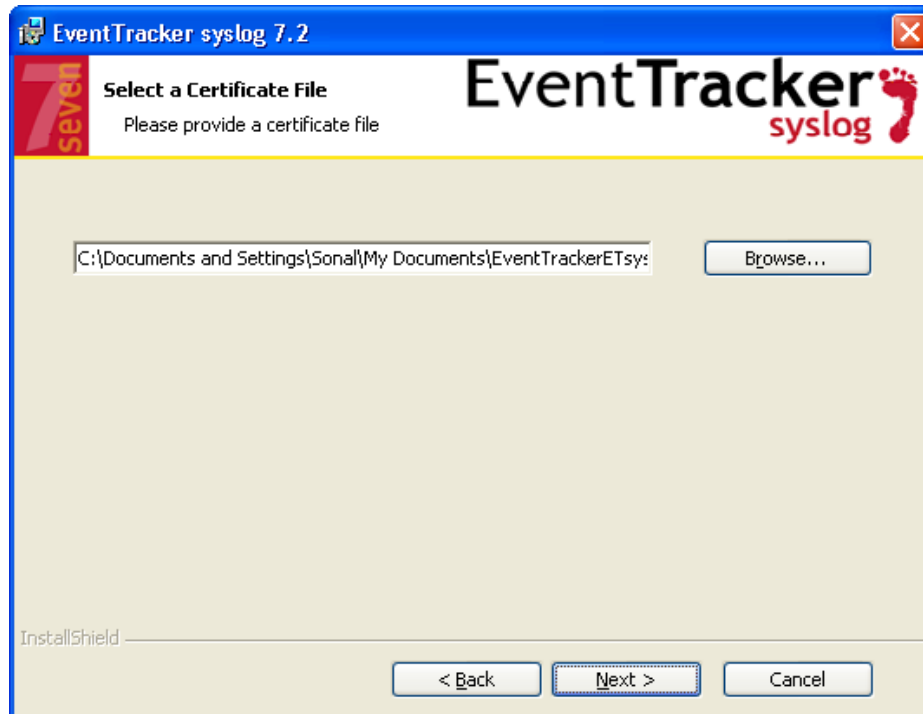


Figure 4

5. Click the **Next** button.

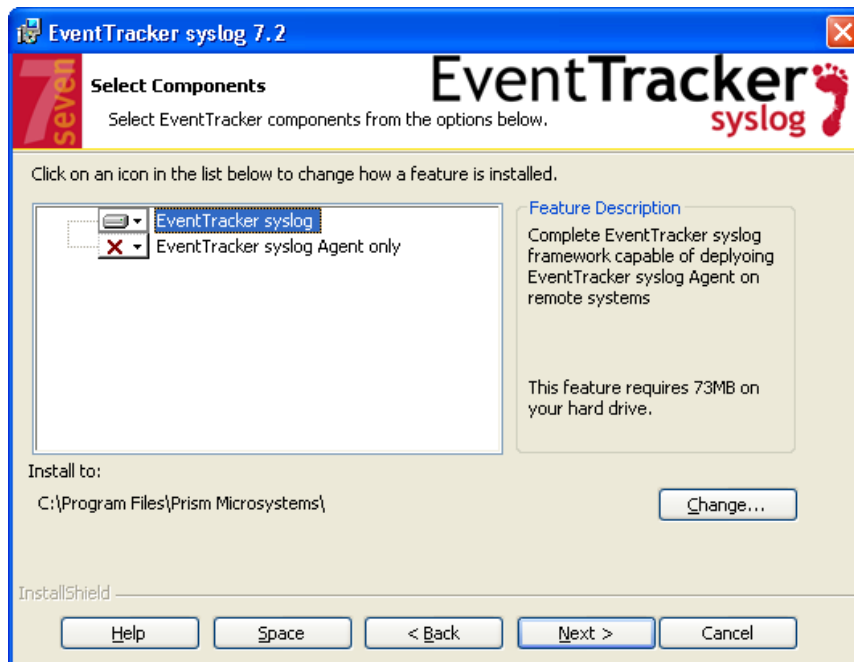


Figure 5

Click	To
<input type="button" value="Change..."/>	Change the default installation path.
<input type="button" value="Help"/>	See the 'Select components Tips'.
<input type="button" value="Space"/>	See the disk size, available disk space and required disk space.

6. Select **EventTracker syslog** option (If not selected), and then click the **Next** button. EventTracker displays syslog destination page.

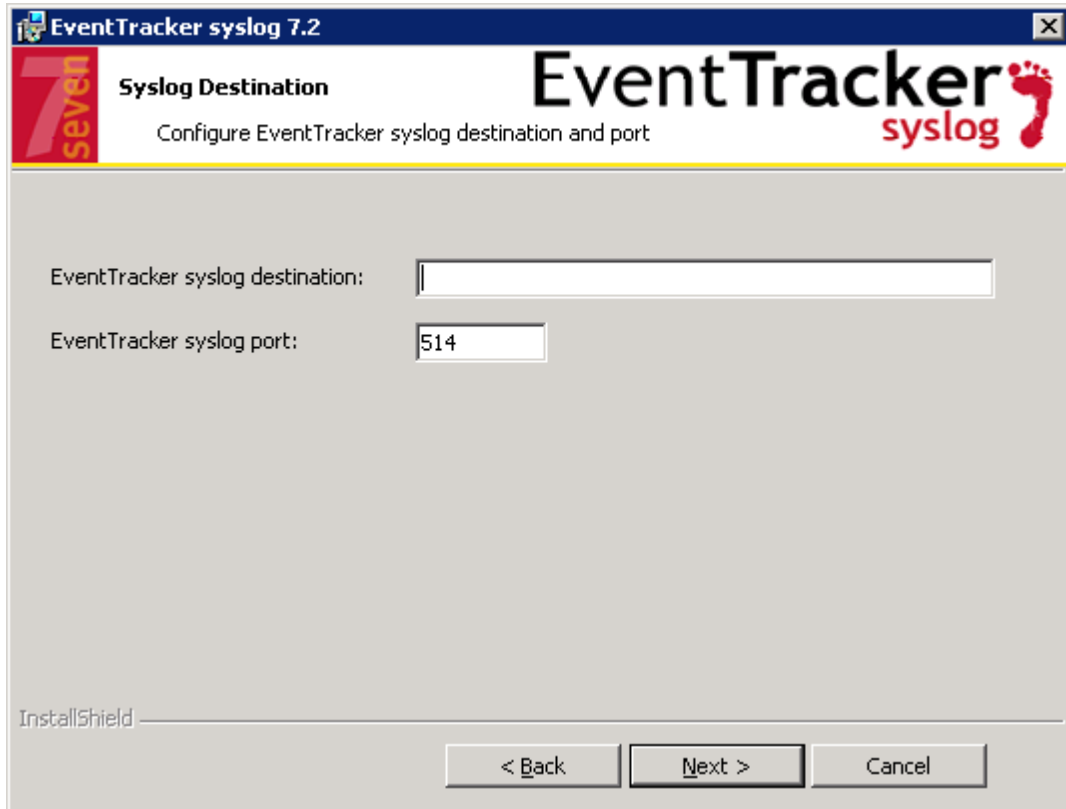


Figure 6

7. Click the **Next** button.

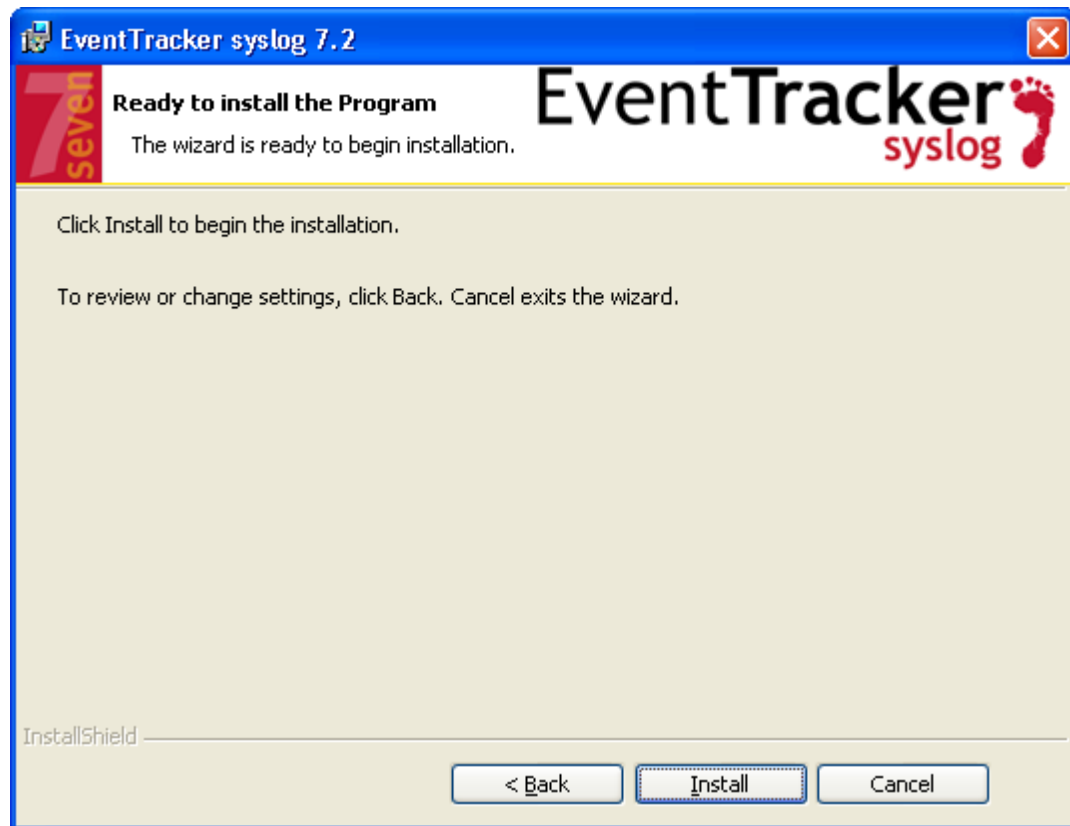


Figure 7

8. Click the **Install** button.
EventTracker starts with installing EventTracker Syslog.

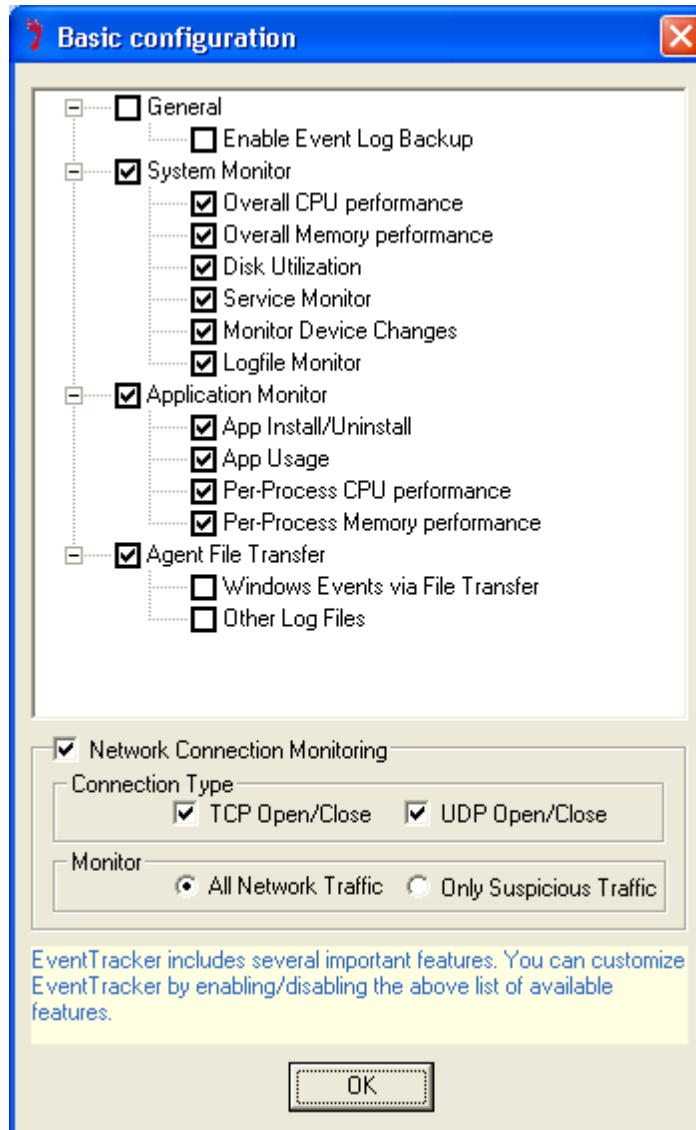


Figure 8

NOTE: 'Enable Event Log Backup' option is available only for pre-vista machines and not available for post-vista machines.

9. In **Basic configuration** window, click the appropriate options (OPTIONAL), and then click the **OK** button.

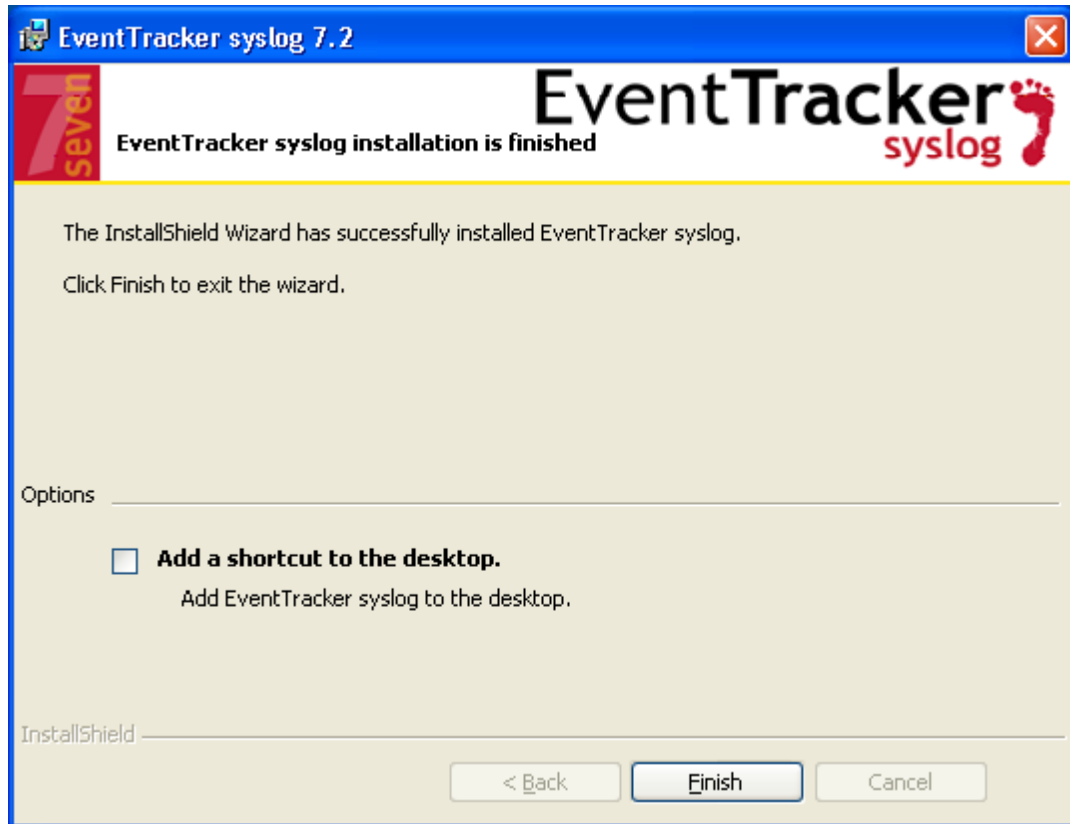
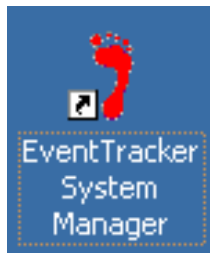


Figure 9

10. Click **Add a shortcut to the desktop** checkbox (OPTIONAL), and then click the **Finish** button. On the desktop, you can see a shortcut added for EventTracker syslog.



EventTracker Windows syslog – Agent Installation

1. Launch the **etwSyslogRel72.exe** file.
EventTracker displays InstallShield Wizard



Figure 10

2. Click the **Next** button.

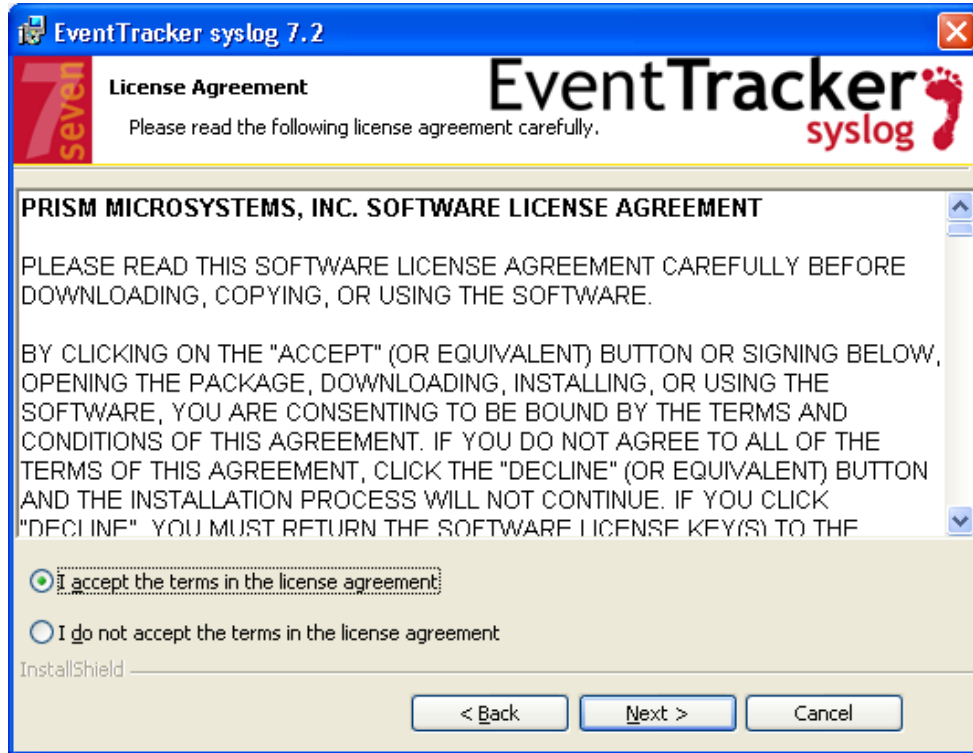


Figure 11

3. Click **I accept the terms in the license agreement** option, and then click the **Next** button.

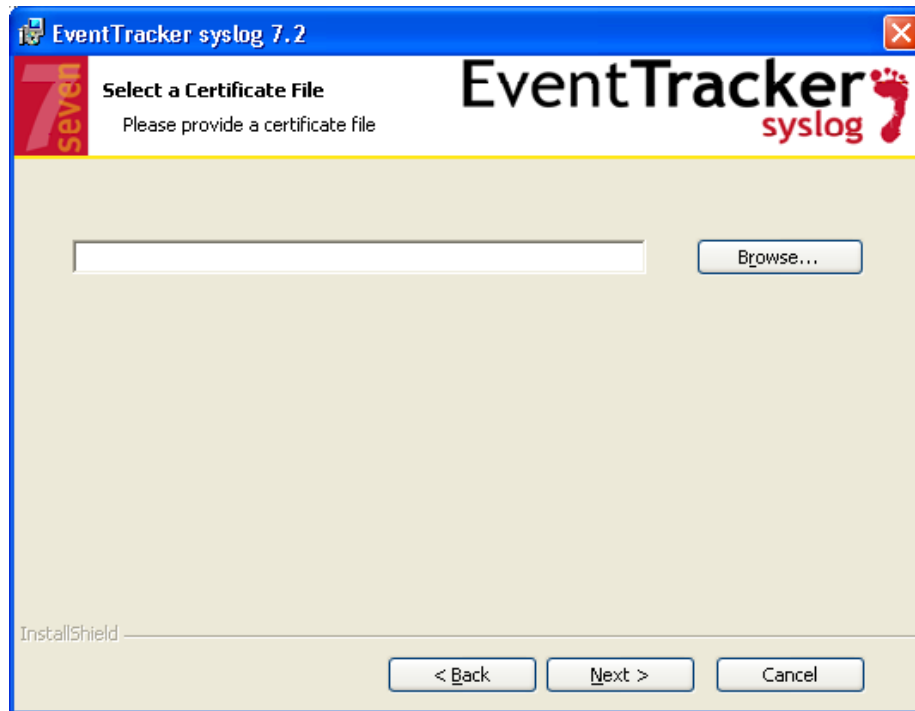


Figure 12

4. Click the **Browse** button, locate the certificate path, and then click the appropriate certificate.

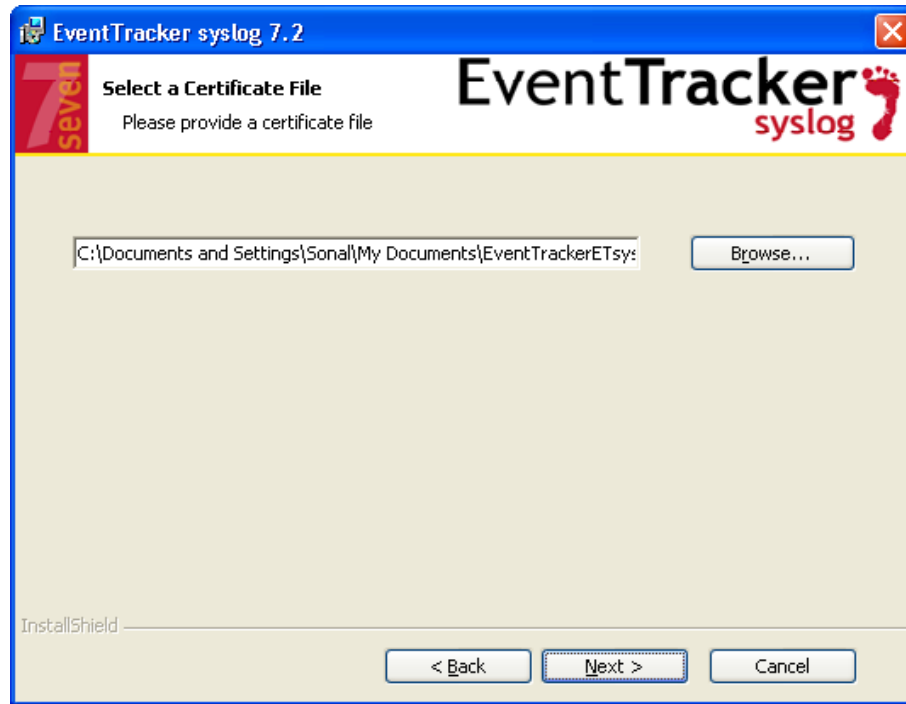


Figure 13

5. Click the **Next** button.

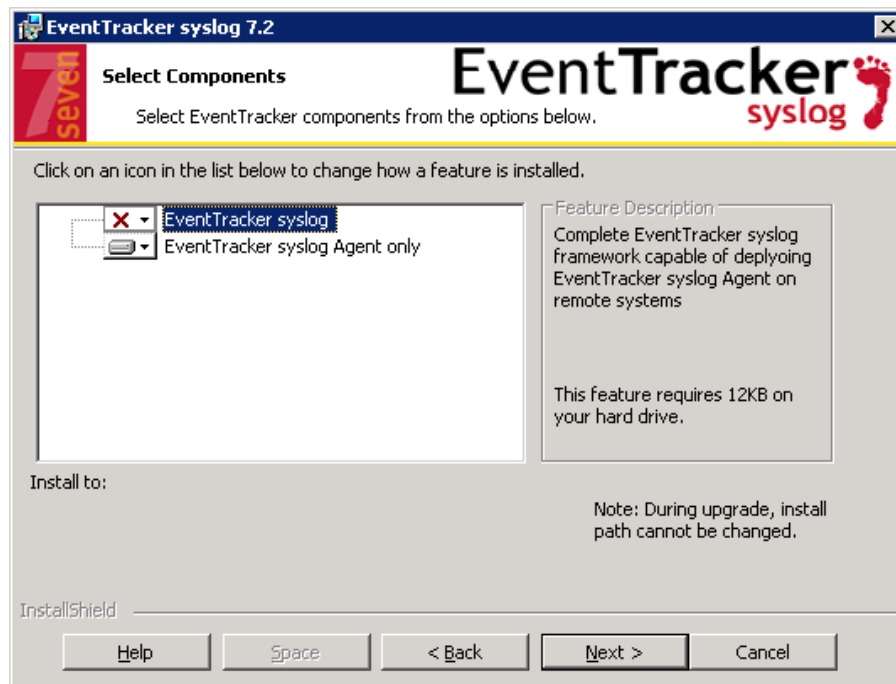


Figure 14

Click	To
<input type="button" value="Change..."/>	Change the default installation path.
<input type="button" value="Help"/>	See the 'Select components Tips'.
<input type="button" value="Space"/>	See the disk size, available disk space and required disk space.

6. Select **EventTracker syslog Agent Only** option, and then click the **Next** button. EventTracker displays syslog destination page.

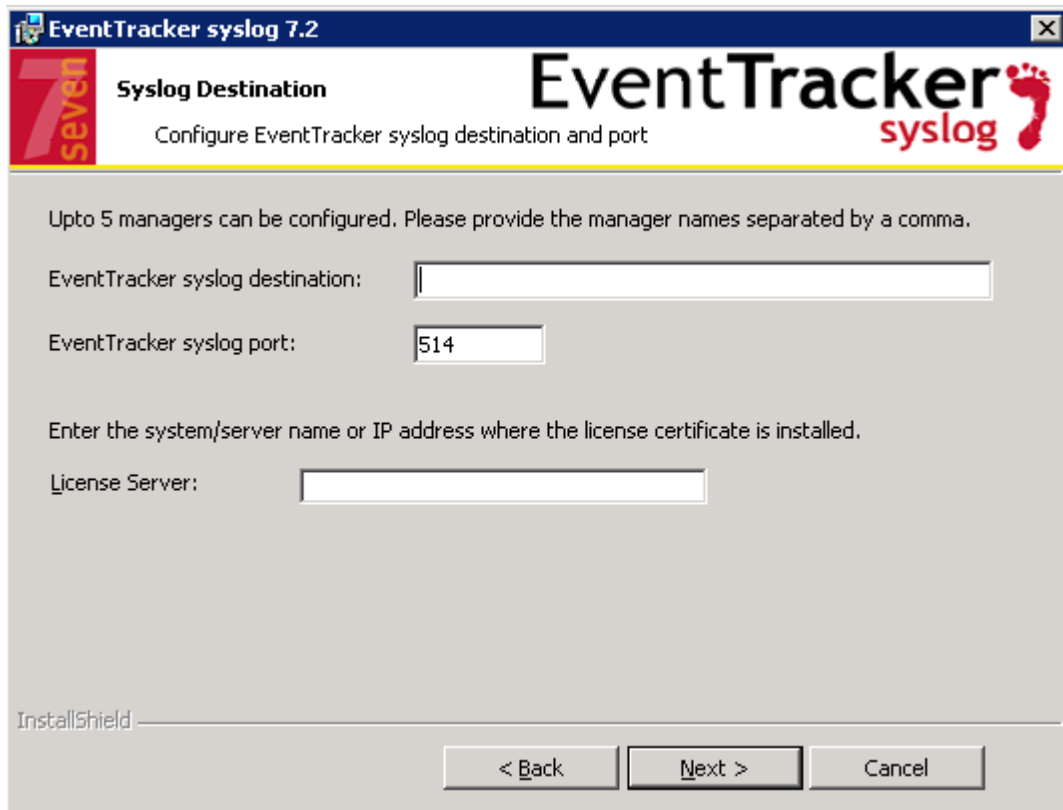


Figure 15

7. Click the **Next** button.

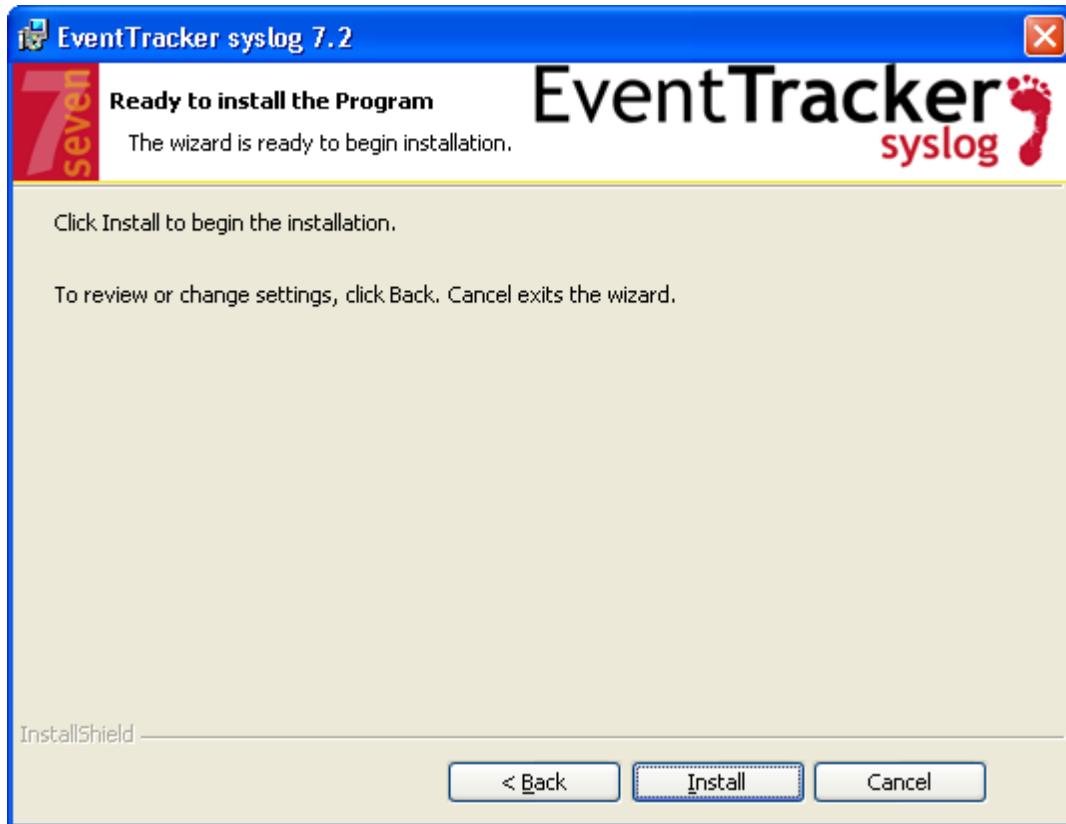


Figure 16

8. Click the **Install** button.
EventTracker starts with installing EventTracker Syslog.

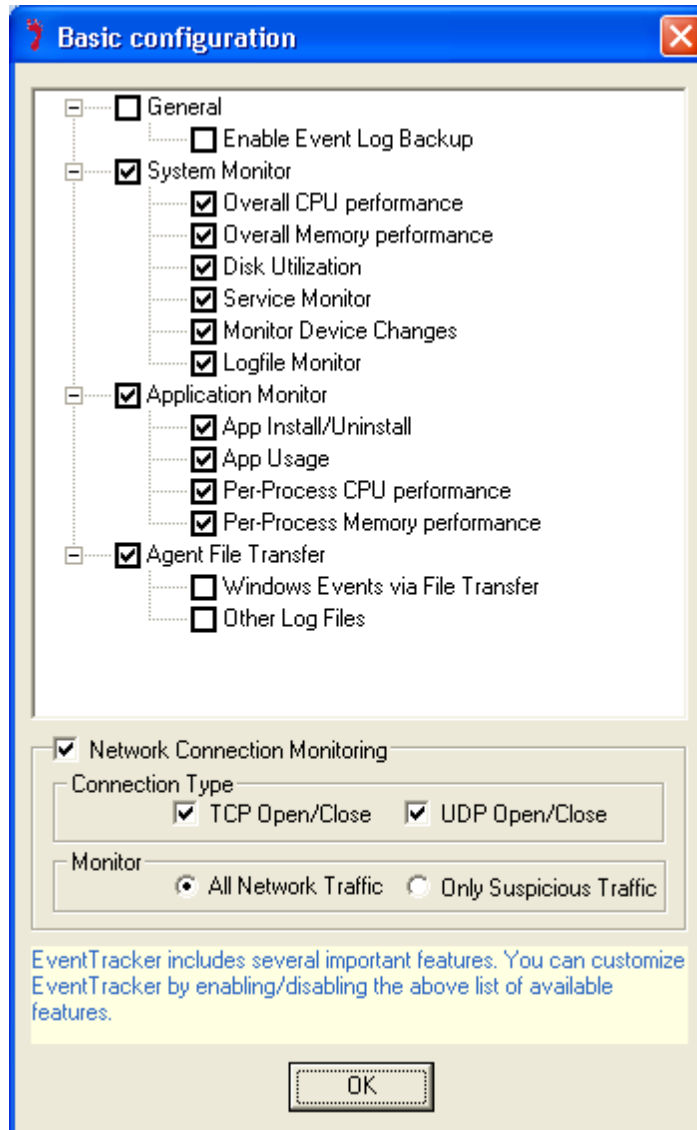


Figure 17

NOTE: 'Enable Event Log Backup' option is available only for pre-vista machines and not available for post-vista machines.

9. In **Basic configuration** window, click the appropriate options (OPTIONAL), and then click the **OK** button.

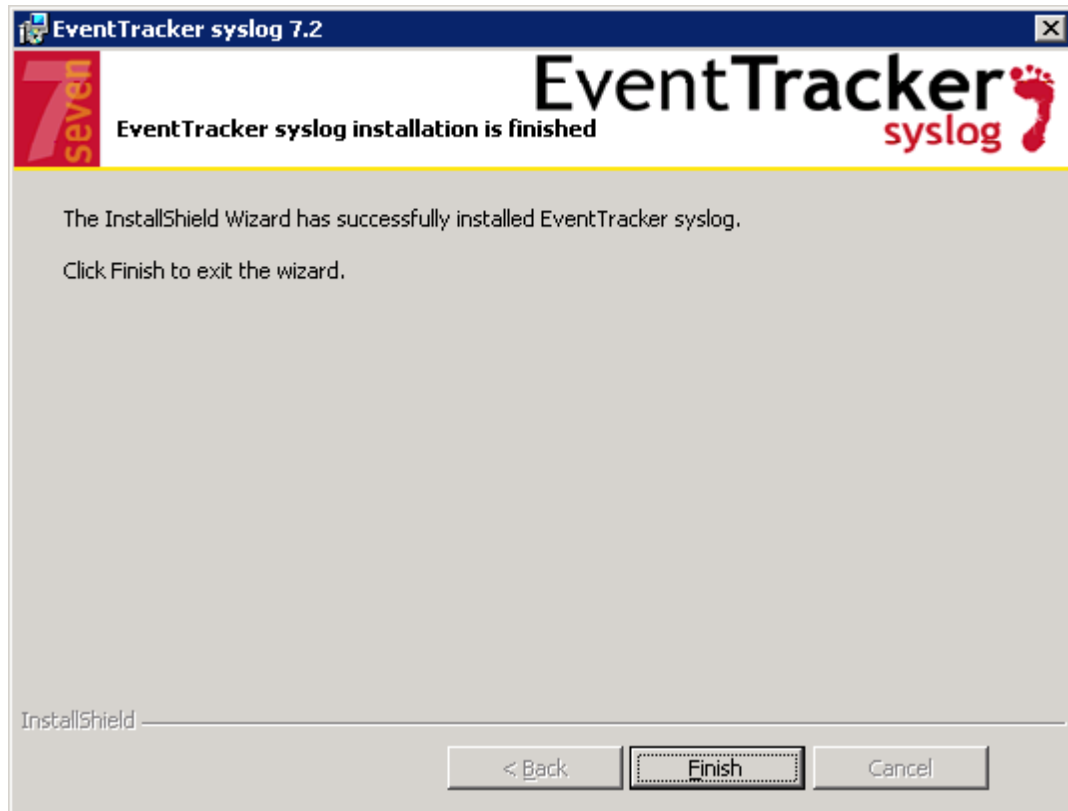


Figure 18

10. Click the **Finish** button